

↔ TAX ↔

↔ ASSESSMENT MAP ↔

OF THE

**BOROUGH
OF**

MERCHANTVILLE

IN THE

**COUNTY OF CAMDEN
NEW JERSEY**



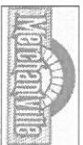
24 GA 28003800

REMINGTON & VERNICK ENGINEERS

232 KING'S HIGHWAY EAST HADDONFIELD, N.J. 08033

(856) 795-9595, FAX (856) 795-1892

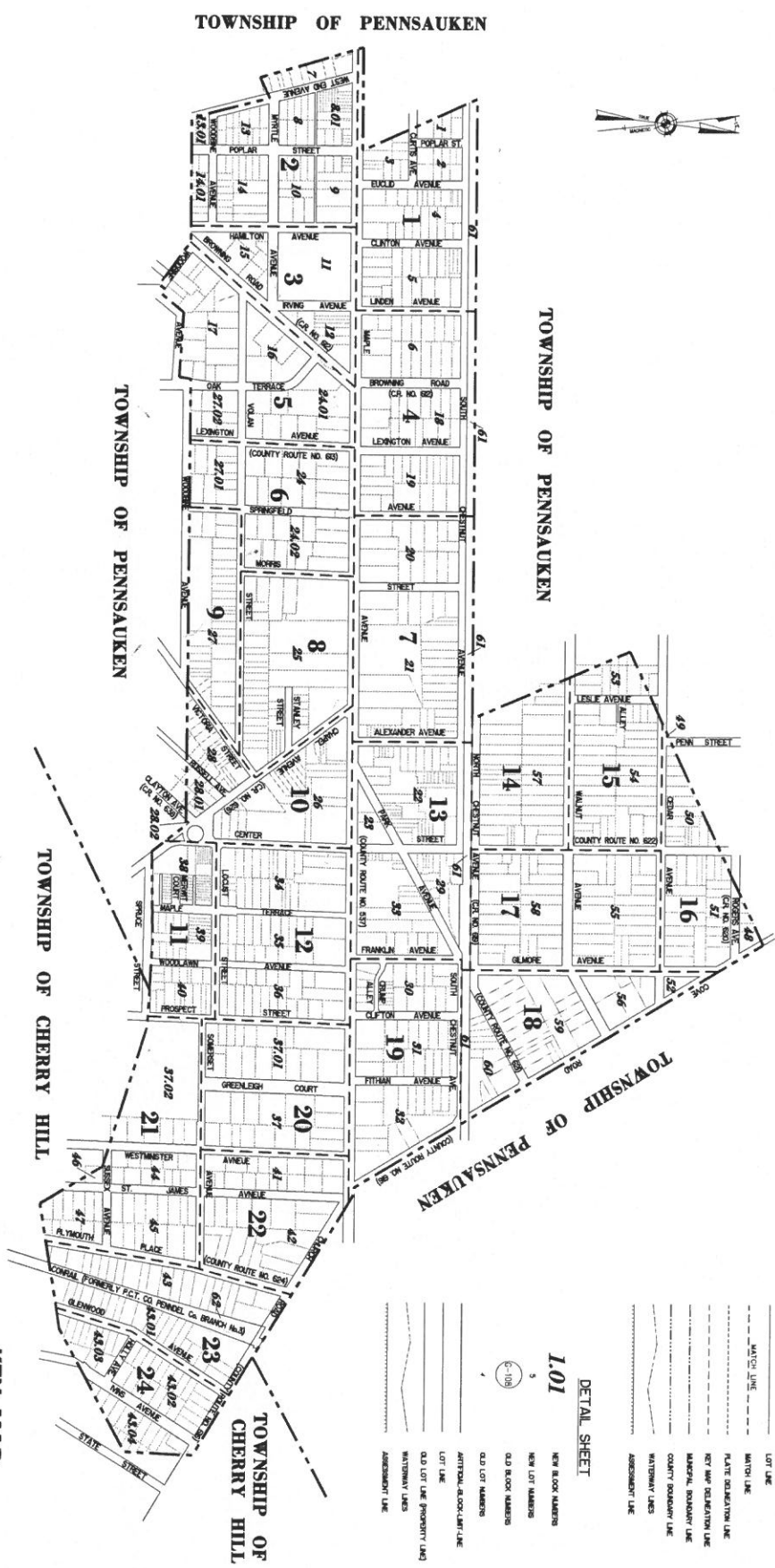
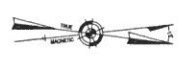
WEB SITE ADDRESS: WWW/RVE.COM



2011

DATE	REVISIONS
12-27-2001	CRAIG F. REMINGTON 23924
11-16-2001	CRAIG F. REMINGTON 23924
11-16-2001	CRAIG F. REMINGTON 23924
11-16-2001	CRAIG F. REMINGTON 23924
11-16-2001	CRAIG F. REMINGTON 23924
11-16-2001	CRAIG F. REMINGTON 23924
11-16-2001	CRAIG F. REMINGTON 23924
11-16-2001	CRAIG F. REMINGTON 23924
11-16-2001	CRAIG F. REMINGTON 23924
11-16-2001	CRAIG F. REMINGTON 23924

- NOTES:**
1. THE AREAS, BOUNDARIES AND DIMENSIONS SHOWN ON THIS TAX MAP ARE DERIVED FROM GROUND SURVEYS, AERIAL SURVEYS AND RECORDED PLATS, MAPS, DEEDS AND WILLS ARE TO BE USED FOR ASSESSMENT PURPOSES ONLY.
 2. THIS TAX MAP SUPERSEDES THE TAX MAP APPROVED DATE 9-26-94



KEY MAP

- LEGEND**
- KEY MAP**
- 10 PLATE NUMBER
 - 107 BLOCK NUMBER
 - ATTENTION BLOCK/LINE
 - LOT LINE
 - PLATE LINE
 - PLATE DEMARCATORY LINE
 - NET MAP DEMARCATORY LINE
 - MARSHAL BOUNDARY LINE
 - COUNTY BOUNDARY LINE
 - NATURAL LINES
 - ASSESSMENT LINE

- DETAIL SHEET**
- 101**
- NEW BLOCK NUMBERS
 - NEW LOT NUMBERS
 - OLD BLOCK NUMBERS
 - OLD LOT NUMBERS
 - ATTENTION BLOCK/LINE
 - LOT LINE
 - OLD LOT LINE (PROPERTY LAND)
 - NATURAL LINES
 - ASSESSMENT LINE

I hereby certify that this map and any related survey has been made under my immediate supervision and complies with the laws of the State of New Jersey.

CRAIG F. REMINGTON LAND SURVEYOR L.C. NO. 23924

THIS TAX MAP PLAT HAS BEEN SUBMITTED TO THE BOARD OF TAXATION AND COUNTY CLERK (COUNTY) AND GOVERNOR'S OFFICE (COUNTY) FOR REVIEW AND APPROVAL. THE BOARD OF TAXATION AND COUNTY CLERK HAS REVIEWED THE MAP AND PLAT AND HAS APPROVED THE MAP AND PLAT. THE BOARD OF TAXATION AND COUNTY CLERK HAS REVIEWED THE MAP AND PLAT AND HAS APPROVED THE MAP AND PLAT. THE BOARD OF TAXATION AND COUNTY CLERK HAS REVIEWED THE MAP AND PLAT AND HAS APPROVED THE MAP AND PLAT.

KEY MAP

BOROUGH OF MERCHANTVILLE

CAMDEN COUNTY NEW JERSEY

CRAIG F. REMINGTON LAND SURVEYOR L.C. NO. 23924

REMINGTON & VERNICK ENGINEERS

2400 NORTH BROADWAY SUITE 200 CAMDEN, NJ 08103

TO SHOW CONDITIONS AS OF 7-8-2000

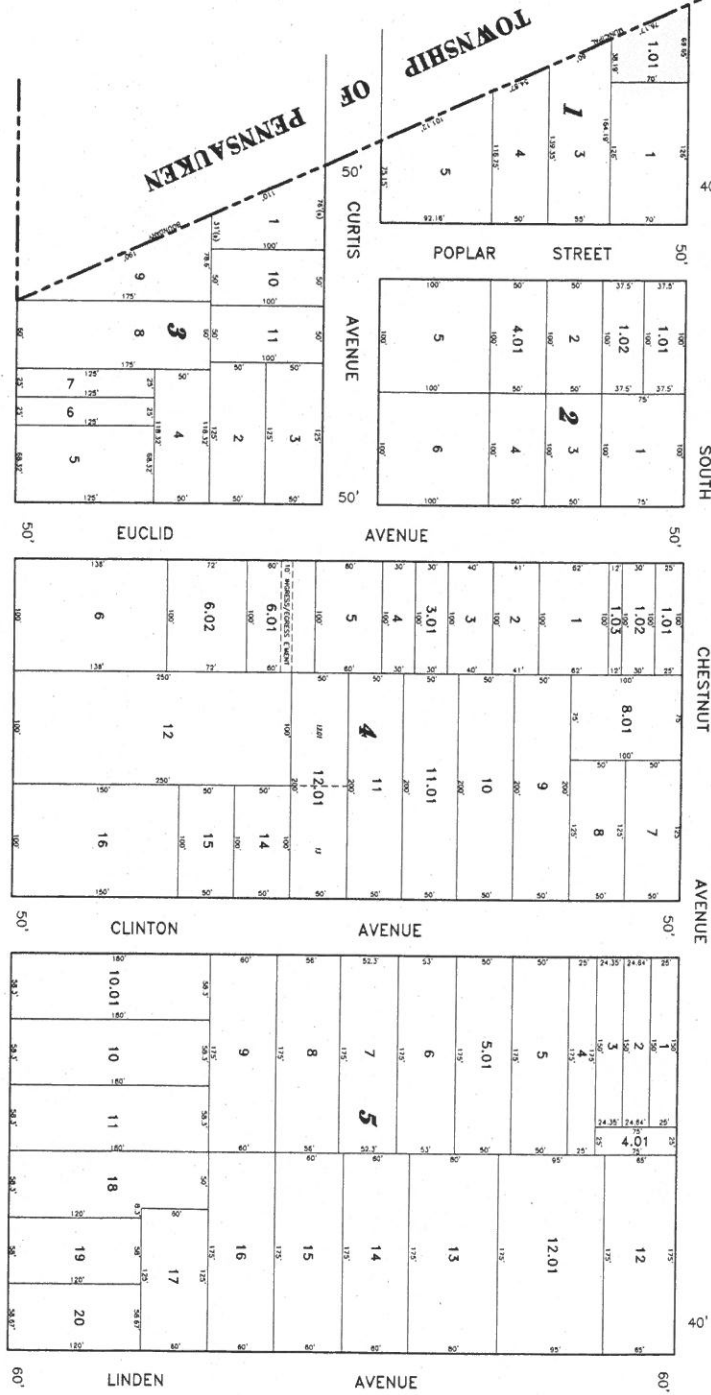
KEY MAP

TOWNSHIP OF PENNSAUKEN

61

1.51 Acres

REVISIONS	
1-18-2004	DATE OF REVISION
1-18-2004	BY: C.F. REMINGTON
9-18-2003	DATE OF REVISION
9-18-2003	BY: C.F. REMINGTON
2/20/02	DATE OF REVISION
2/20/02	BY: C.F. REMINGTON



POPLAR ST. SHEET 2

MAPLE AVENUE SHEET 3

HAMILTON AVE. SHEET 4

IRVING AVE.

(COUNTY ROUTE NO. 537)

THIS TAX MAP PLAN HAS BEEN PREPARED BY THE TAX MAPS AND PLANS DIVISION OF THE COUNTY ENGINEER'S OFFICE (C.E.O.) AND DOES NOT CONSTITUTE A GUARANTEE OF THE ACCURACY OF THE INFORMATION HEREON. THE TAX MAPS AND PLANS DIVISION OF THE C.E.O. IS NOT RESPONSIBLE FOR ANY ERRORS OR OMISSIONS IN THIS TAX MAP PLAN. THE TAX MAPS AND PLANS DIVISION OF THE C.E.O. IS NOT RESPONSIBLE FOR ANY ERRORS OR OMISSIONS IN THIS TAX MAP PLAN. THE TAX MAPS AND PLANS DIVISION OF THE C.E.O. IS NOT RESPONSIBLE FOR ANY ERRORS OR OMISSIONS IN THIS TAX MAP PLAN.

TAX MAP
BOROUGH OF MERCHANTVILLE
 CAMDEN COUNTY NEW JERSEY
 SCALE: 1" = 50'
 DATE: 8-31-1982
CRAIG F. REMINGTON & VERRICK ENGINEERS
 200 NORTH HANOVER EAST HANOVER, NJ 07930
 908-982-1100
 1000 WEST WASHINGTON
 908-982-1100

TOWNSHIP OF PENNSAUKEN

EUCLIC AVE.

SHEET 1

CLINTON AVE.

MAPLE AVENUE

AVENUE

(COUNTY ROUTE NO. 537)

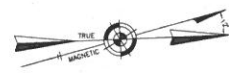
99

REVISIONS

NO.	DATE	DESCRIPTION
1	11-18-2008	CRAIG F. REMINGTON 23924
2	7-18-2010	CRAIG F. REMINGTON 23924
3	4-28-2011	CRAIG F. REMINGTON 23924



SHEET 3

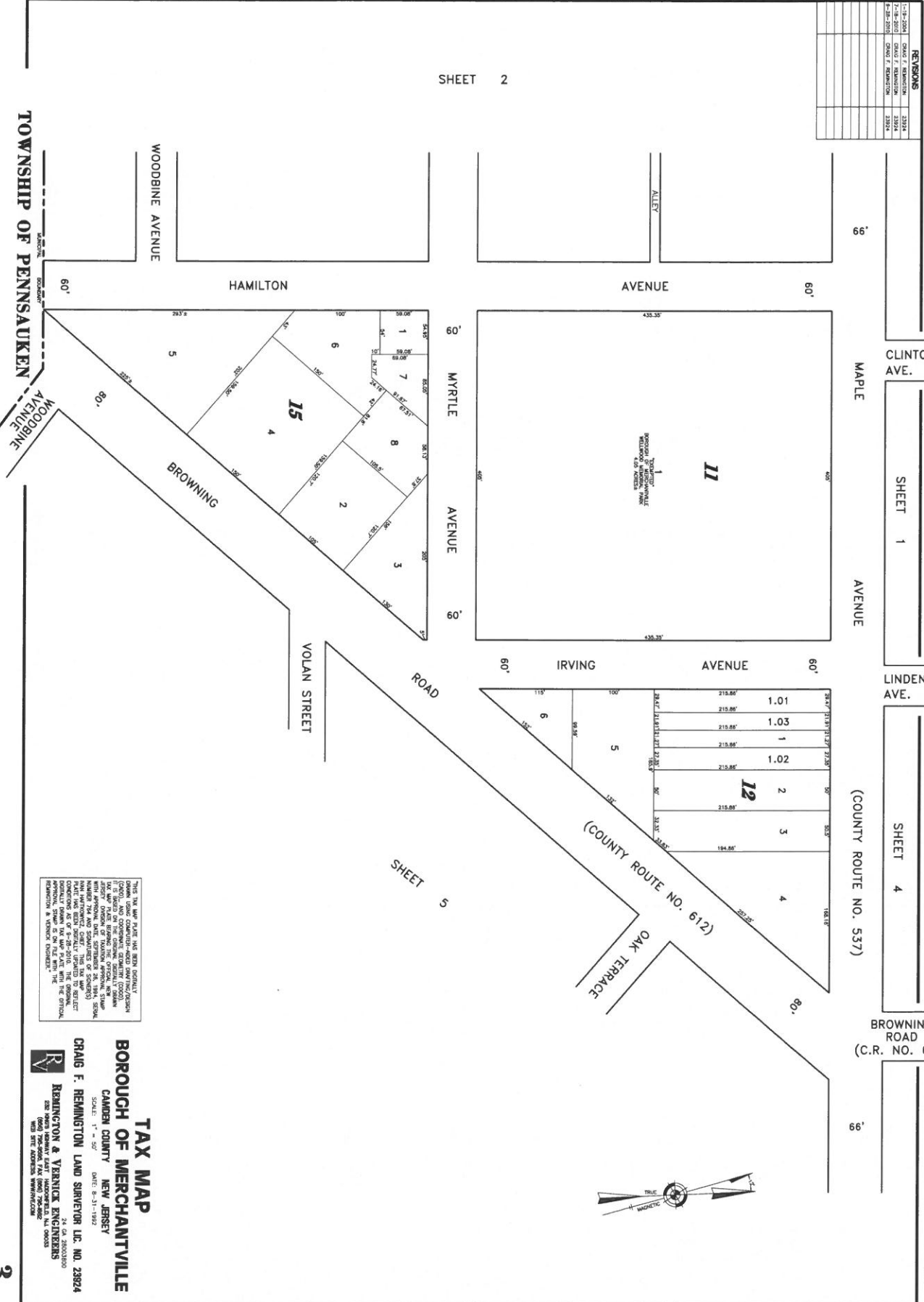


THIS TAX MAP PLAN HAS BEEN PREPARED IN ACCORDANCE WITH THE PROVISIONS OF THE TAX MAP ACT, P.L. 1998-10 (N.J.A.C. 17:27), AND COMPLIANT ELECTRONIC RECORDING (E-RECORDING) ACT, P.L. 2002-10 (N.J.A.C. 17:28). THE TAX MAP PLAN IS BASED ON THE ORIGINAL RECORDING OF THE TAX MAP PLAN AND SURVEYOR'S MAP NUMBER 794 AND SURVEYOR'S MAP NUMBER 795. THE TAX MAP PLAN HAS BEEN ELECTRONICALLY FILED TO THE COUNTY CLERK'S OFFICE ON 04-28-2011. THE ORIGINAL RECORDING OF THE TAX MAP PLAN IS ON FILE WITH THE COUNTY CLERK'S OFFICE IN NEW JERSEY.

TAX MAP
BOROUGH OF MERCHANTVILLE
 CAMDEN COUNTY NEW JERSEY
 DATE: 04-28-2011
 CRAIG F. REMINGTON LAND SURVEYOR L.C. NO. 23924
 REMINGTON & YERNICK ENGINEERS
 24 CA. 3800000
 1000 W. 10TH ST. SUITE 200
 FREEHOLD, NJ 08040
 732-396-6666 FAX 732-396-6668
 WWW.REYENGINEERS.COM

11-30-2004	CRAIG F. REMINGTON	23924
11-30-2004	CRAIG F. REMINGTON	23924
11-30-2004	CRAIG F. REMINGTON	23924
11-30-2004	CRAIG F. REMINGTON	23924
11-30-2004	CRAIG F. REMINGTON	23924
11-30-2004	CRAIG F. REMINGTON	23924
11-30-2004	CRAIG F. REMINGTON	23924
11-30-2004	CRAIG F. REMINGTON	23924
11-30-2004	CRAIG F. REMINGTON	23924
11-30-2004	CRAIG F. REMINGTON	23924

SHEET 2



CLINTON AVE.

SHEET 1

LINDEN AVE.

SHEET 4

(COUNTY ROUTE NO. 537)

BROWNING ROAD
(C.R. NO. 612)

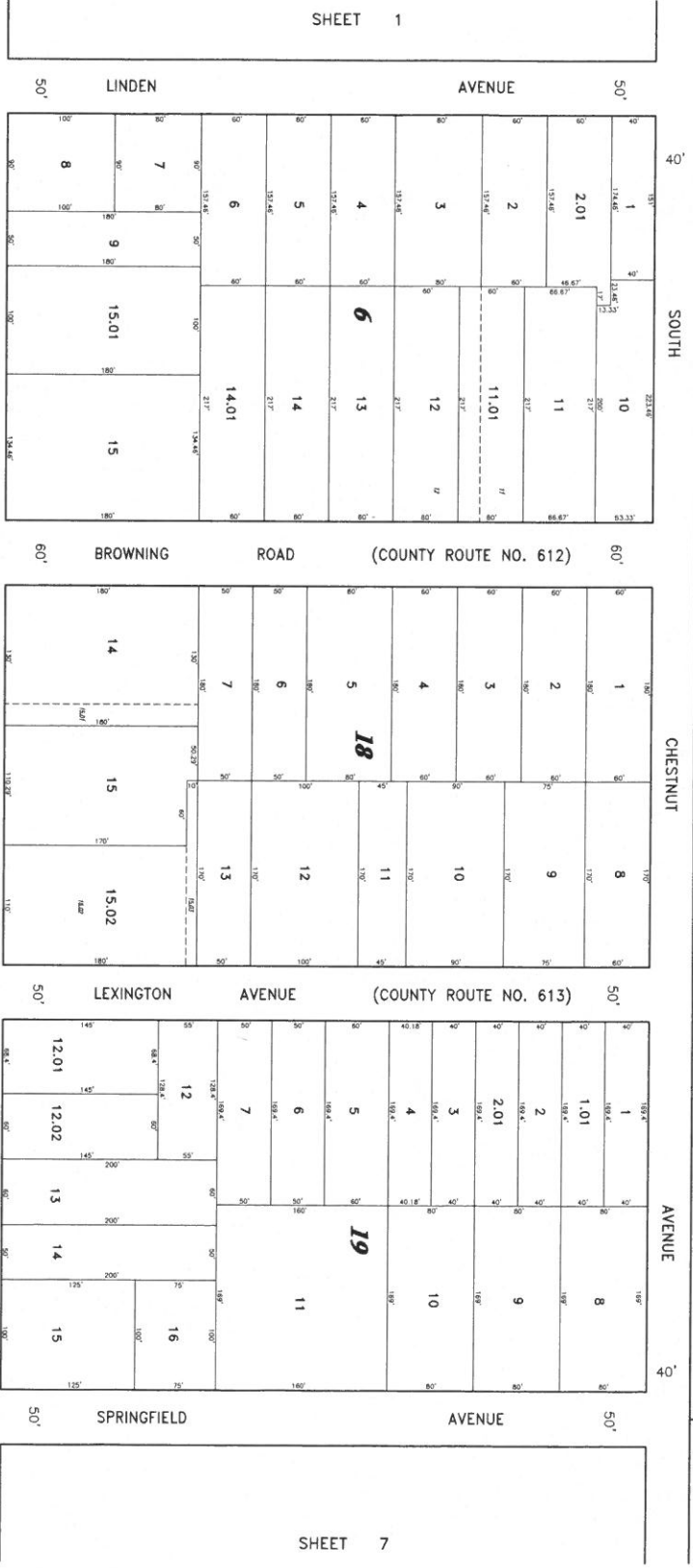
TOWNSHIP OF PENNSAUKEN

THIS TAX MAP PLAN HAS BEEN SUBMITTED TO THE CAMDEN COUNTY BOARD OF TAXATION (CBO) AND CAMDEN COUNTY (CCO) FOR REVIEW AND APPROVAL. THE CBO AND CCO HAVE REVIEWED THE MAP AND HAVE APPROVED THE MAP WITH APPROVED DATE, SETBACKS, ETC. 1941, 5000. NUMBER THE LOT AND COMPASS (OR COURSE) OF EACH LOT. THE MAP HAS BEEN SUBMITTED TO THE CBO AND CCO FOR REVIEW AND APPROVAL. THE CBO AND CCO HAVE REVIEWED THE MAP AND HAVE APPROVED THE MAP WITH APPROVED DATE, SETBACKS, ETC. 1941, 5000. NUMBER THE LOT AND COMPASS (OR COURSE) OF EACH LOT. THE MAP HAS BEEN SUBMITTED TO THE CBO AND CCO FOR REVIEW AND APPROVAL. THE CBO AND CCO HAVE REVIEWED THE MAP AND HAVE APPROVED THE MAP WITH APPROVED DATE, SETBACKS, ETC. 1941, 5000. NUMBER THE LOT AND COMPASS (OR COURSE) OF EACH LOT.

TAX MAP
BOROUGH OF MERCHANTVILLE
 CAMDEN COUNTY NEW JERSEY
 CRAIG F. REMINGTON LAND SURVEYOR LLC. NO. 23924
 REMINGTON & YERNICK ENGINEERS
 24 CA 26003800
 1000 W. 10TH AVE. SUITE 100
 CAMDEN, NJ 08102
 (609) 795-0000 FAX (609) 795-0000
 WWW.REMINGTON-ENGINEERS.COM

TOWNSHIP OF PENNSAUKEN

2
61



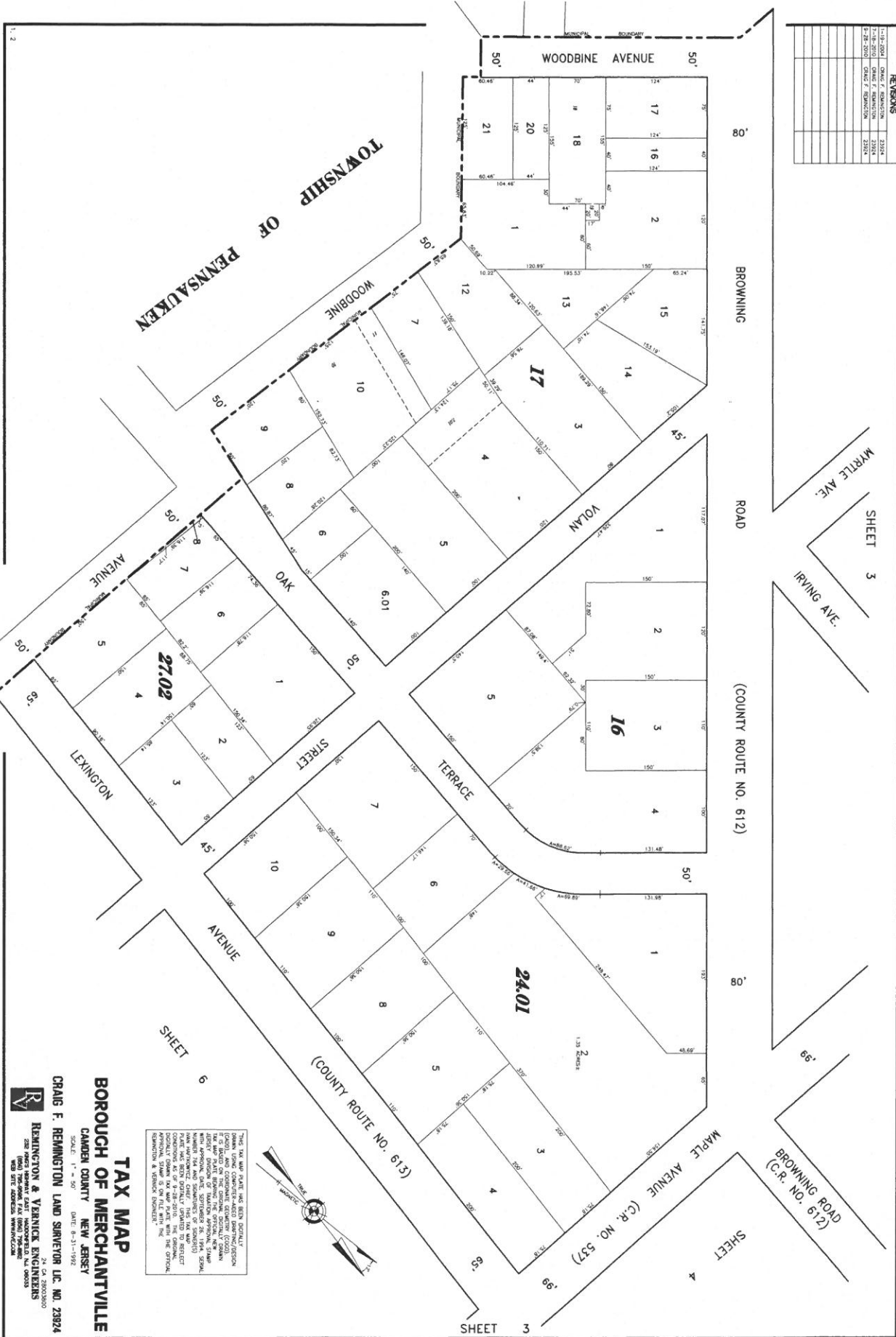
REVISIONS

1-11-2004	CHANG F. REMINGTON	23924
7-18-2010	CHANG F. REMINGTON	23924
4-28-2012	CHANG F. REMINGTON	23924

THIS TAX MAP PLAT HAS BEEN SUBMITTED TO THE BOARD OF TAXATION (BOA) AND CONSIDERED COMPLETE (BOA) AND COMPLETE (BOA) FOR THE YEAR 2012. THE TAX MAP PLAT IS THE OFFICIAL MAP FOR THE YEAR 2012. THE TAX MAP PLAT IS THE OFFICIAL MAP FOR THE YEAR 2012. THE TAX MAP PLAT IS THE OFFICIAL MAP FOR THE YEAR 2012.

TAX MAP
BOROUGH OF MERCHANTVILLE
 CAMDEN COUNTY NEW JERSEY
 CRAIG F. REMINGTON LAND SURVEYOR LLC NO. 23924
 REMINGTON & VERRICK ENGINEERS
 74 WA 23003500
 1000 THEODORE RD (609) 796-0600
 1000 THEODORE RD (609) 796-0600
 WITH SITE ADDRESS VERIFICATION

REVISIONS	
7-14-2004	CHANG F. REMINGTON 23224
7-14-2004	CHANG F. REMINGTON 23224
8-28-2004	CHANG F. REMINGTON 23224



TAX MAP
BOROUGH OF MERCHANTVILLE
 CAMDEN COUNTY
 NEW JERSEY
 CRAIG F. REMINGTON LAND SURVEYOR, LIC. NO. 23824
 DATE: 8-31-1992
 SCALE: 1" = 50'

THIS TAX MAP HAS BEEN PREPARED BY THE CAMDEN COUNTY ENGINEERING DEPARTMENT UNDER THE SUPERVISION OF THE CAMDEN COUNTY ENGINEER. IT IS HEREBY CERTIFIED THAT THE SAME IS A TRUE AND CORRECT REPRESENTATION OF THE RECORDS OF THE CAMDEN COUNTY ENGINEERING DEPARTMENT. THE DATE OF THE SURVEY IS 8-31-1992. THE CAMDEN COUNTY ENGINEER'S OFFICE IS LOCATED AT 1000 MARKET STREET, CAMDEN, NEW JERSEY 08102.





TOWNSHIP OF PENNSAUKEN

LEXINGTON AVENUE

SHEET 4

MAPLE AVENUE

SPRINGFIELD AVENUE

SHEET 7

(COUNTY ROUTE NO. 537)

MORRIS STREET

SHEET 9



REVISIONS	
1-15-2004	CRAIG F. REMINGTON 23824
2-18-2010	CRAIG F. REMINGTON 23824
3-23-2010	CRAIG F. REMINGTON 23824

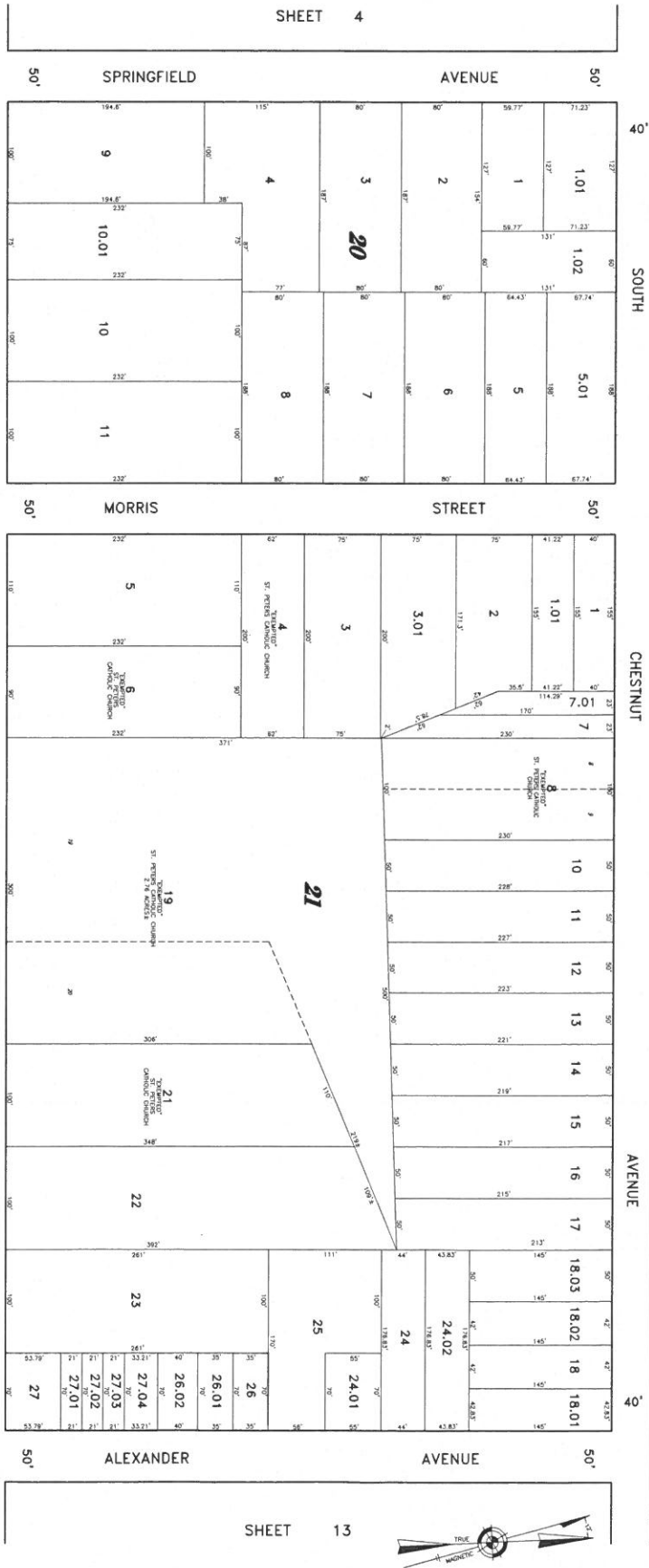
THIS TAX MAP PLAN HAS BEEN ORIGINALLY DRAWN UNDER CONTRACT AND IS BEING SUBMITTED TO THE BOARD OF TAXATION FOR REVIEW AND APPROVAL. THE BOARD OF TAXATION HAS REVIEWED THIS MAP AND HAS APPROVED IT FOR RECORDATION. THE BOARD OF TAXATION HAS REVIEWED THIS MAP AND HAS APPROVED IT FOR RECORDATION. THE BOARD OF TAXATION HAS REVIEWED THIS MAP AND HAS APPROVED IT FOR RECORDATION.

TAX MAP
BOROUGH OF MERCHANTVILLE
CAMDEN COUNTY NEW JERSEY
 SCALE: 1" = 50'
 DATE: 8-31-1982
CRAIG F. REMINGTON & YERNICK ENGINEERS
 24 CV 28002800
 1000 PENNSAUKEN TOWNSHIP ROAD
 PENNSAUKEN, NJ 08061

TOWNSHIP OF PENNSAUKEN

SHEET 14
NORTH CHESTNUT AVENUE
(COUNTY ROUTE NO. 619)

3
1.50 ACRES
61



SHEET 4

SHEET 13

SHEET 6

SHEET 8

SHEET 10

REVISIONS

DATE	BY	DESCRIPTION
11-14-2001	CRAIG F. REMINGTON	23924
9-28-2001	CRAIG F. REMINGTON	23924

THIS TAX MAP PLAT HAS BEEN PREPARED IN ACCORDANCE WITH THE PROVISIONS OF THE TAX MAP ACT, P.L. 1994, CHAPTER 127, AND ORDINANCE 2000-10. THE TAX MAP PLAT SHOWS THE OFFICIAL NEW JERSEY TAX MAP PLAT BEARING THE OFFICIAL NUMBER 23924. THE OFFICIAL NEW JERSEY TAX MAP PLAT BEARING THE OFFICIAL NUMBER 23924 AND ORDINANCE 2000-10 ARE THE ONLY AUTHORITY FOR THE OFFICIAL TAX MAP PLAT. THE OFFICIAL TAX MAP PLAT HAS BEEN SOCIALLY UPDATED TO REFLECT THE OFFICIAL TAX MAP PLAT WITH THE OFFICIAL NUMBER 23924. THE OFFICIAL TAX MAP PLAT BEARING THE OFFICIAL NUMBER 23924 IS THE ONLY AUTHORITY FOR THE OFFICIAL TAX MAP PLAT.

TAX MAP
BOROUGH OF MERCHANTVILLE
CAMDEN COUNTY NEW JERSEY

CRAIG F. REMINGTON LAND SURVEYOR, L.L.C. NO. 23924
REMNICK & VERNICK ENGINEERS
222 NORTH HENRY EAST HADDONFIELD, NJ 08033
DATE: 8-31-1992
SCALE: 1" = 50'

MORRIS STREET

SHEET 7

66'

MAPLE AVENUE

AVENUE

(COUNTY ROUTE NO. 537)

69'

SHEET 6

MORRIS STREET

45'

VOLAN STREET

STANLEY STREET

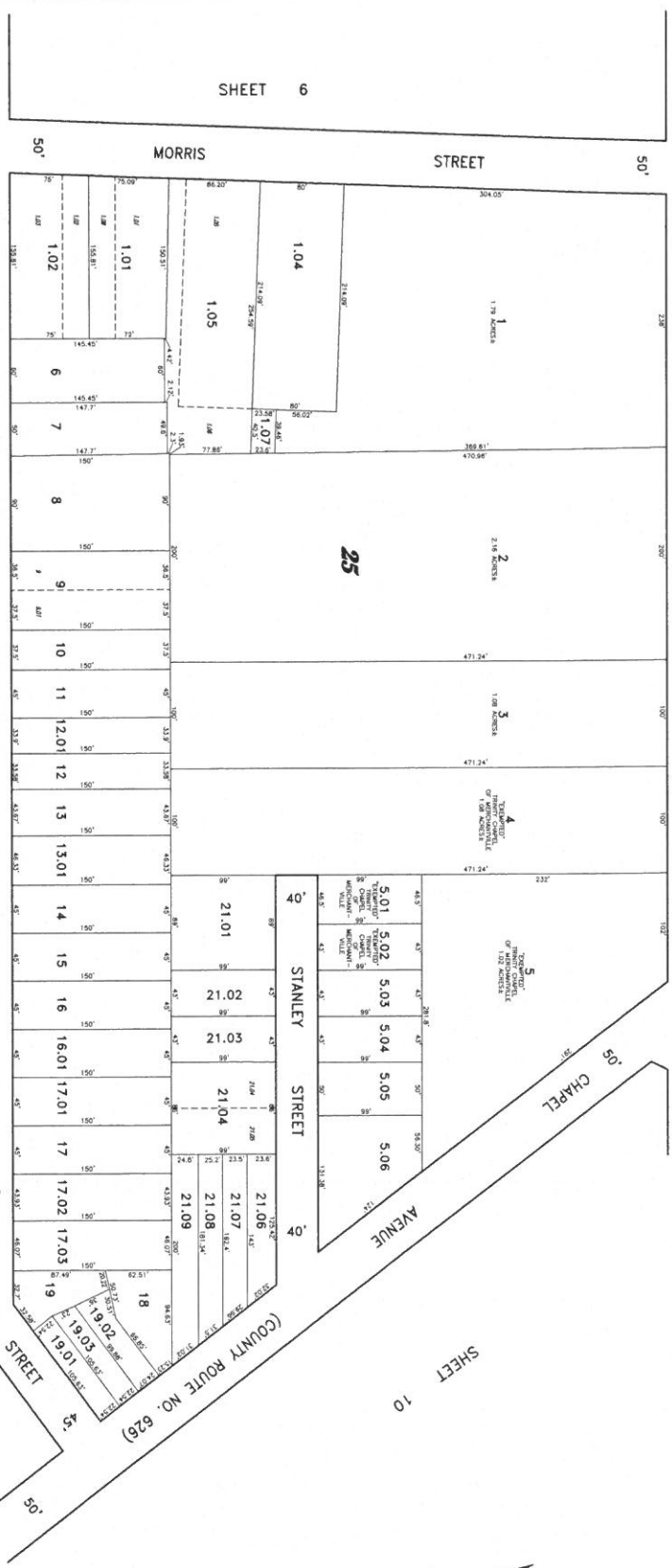
STANLEY STREET

VICTORIA STREET

SHEET 10

45'

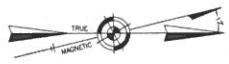
45'



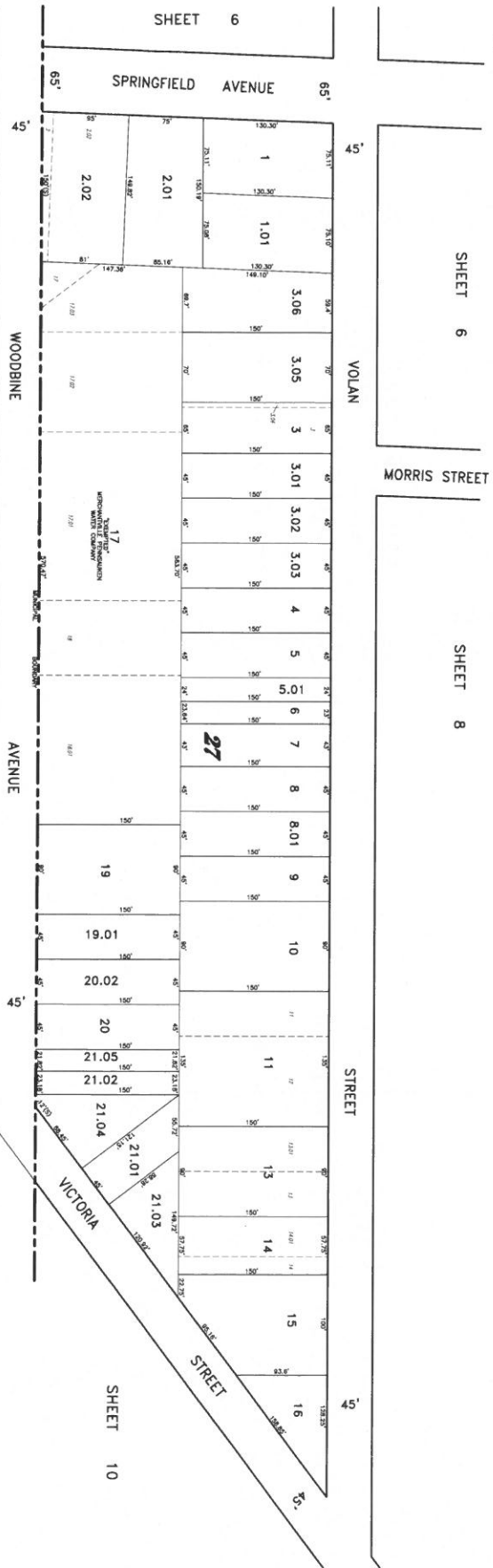
SHEET 9

THIS TAX MAP PLAN HAS BEEN ORIGINALLY DRAWN USING COMPUTER-AIDED DRAFTING/DESIGN (CADD) SOFTWARE. THE ORIGINAL SOURCE OF DATA FOR THIS MAP IS THE OFFICIAL RECORDS OF CAMDEN COUNTY, NEW JERSEY, DIVISION OF LAND USE AND PLANNING. THE OFFICIAL RECORDS OF CAMDEN COUNTY, NEW JERSEY, DIVISION OF LAND USE AND PLANNING ARE THE SOURCE OF THE DATA FOR THIS MAP. THE OFFICIAL RECORDS OF CAMDEN COUNTY, NEW JERSEY, DIVISION OF LAND USE AND PLANNING ARE THE SOURCE OF THE DATA FOR THIS MAP. THE OFFICIAL RECORDS OF CAMDEN COUNTY, NEW JERSEY, DIVISION OF LAND USE AND PLANNING ARE THE SOURCE OF THE DATA FOR THIS MAP.

TAX MAP
BOROUGH OF MERCHANTVILLE
CAMDEN COUNTY NEW JERSEY
CRAIG F. REMINGTON LAND SURVEYOR LIC. NO. 23924
REMINGTON & VERRICK ENGINEERS
 2445 JEFFERSON AVENUE
 2ND FLOOR
 PHILADELPHIA, PA 19103



REVISIONS	
1-13-2004	23924
7-18-2004	23924
9-18-2004	23924
9-28-2004	23924



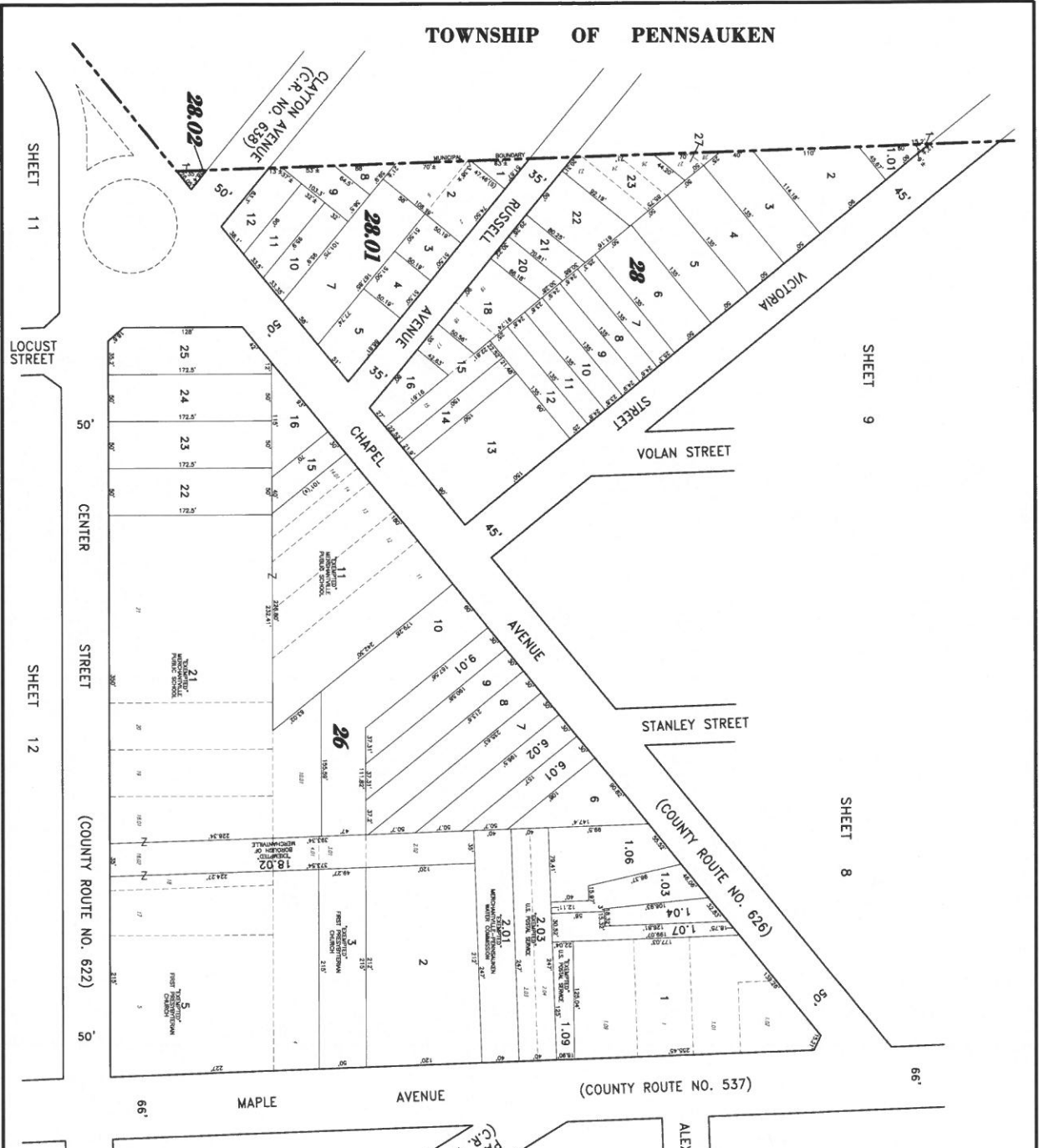
TOWNSHIP OF PENNSAUKEN

THIS TAX MAP PLAN HAS BEEN INDIVIDUALLY PREPARED FOR THE BOROUGH OF MERCHANTVILLE, NEW JERSEY, AND IS SUBJECT TO THE BOROUGH'S ZONING ORDINANCES. THE BOROUGH ENGINEER HAS REVIEWED THIS MAP AND HAS DETERMINED THAT IT COMPLIES WITH THE REQUIREMENTS OF THE BOROUGH'S ZONING ORDINANCES. THE BOROUGH ENGINEER'S REVIEW IS LIMITED TO THE TECHNICAL ASPECTS OF THE MAP AND DOES NOT CONSTITUTE A GUARANTEE OF THE ACCURACY OF THE INFORMATION PROVIDED HEREON. THE BOROUGH ENGINEER'S REVIEW IS LIMITED TO THE TECHNICAL ASPECTS OF THE MAP AND DOES NOT CONSTITUTE A GUARANTEE OF THE ACCURACY OF THE INFORMATION PROVIDED HEREON.

TAX MAP
BOROUGH OF MERCHANTVILLE
 CAMDEN COUNTY NEW JERSEY
 SHEET 1 - OF 50
 DATE: 8-31-1992
 CRAB F. REMINGTON LAND SURVEYOR LIC. NO. 23924
 REMINGTON & ZERNICK ENGINEERS
 24 CA. 28003800
 1000 TOWNSHIP ROAD 2000
 WEBSTER, NEW JERSEY 08092
 WWW.REMINGTON-ENGINEERS.COM

REVISIONS	DATE	BY	DESCRIPTION
1-18-2004	CRAB F. REMINGTON	23924	
2-18-2004	CRAB F. REMINGTON	23924	
3-18-2004	CRAB F. REMINGTON	23924	
4-18-2004	CRAB F. REMINGTON	23924	
5-18-2004	CRAB F. REMINGTON	23924	
6-18-2004	CRAB F. REMINGTON	23924	
7-18-2004	CRAB F. REMINGTON	23924	
8-18-2004	CRAB F. REMINGTON	23924	
9-18-2004	CRAB F. REMINGTON	23924	
10-18-2004	CRAB F. REMINGTON	23924	
11-18-2004	CRAB F. REMINGTON	23924	
12-18-2004	CRAB F. REMINGTON	23924	

TOWNSHIP OF PENNSAUKEN



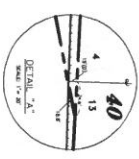
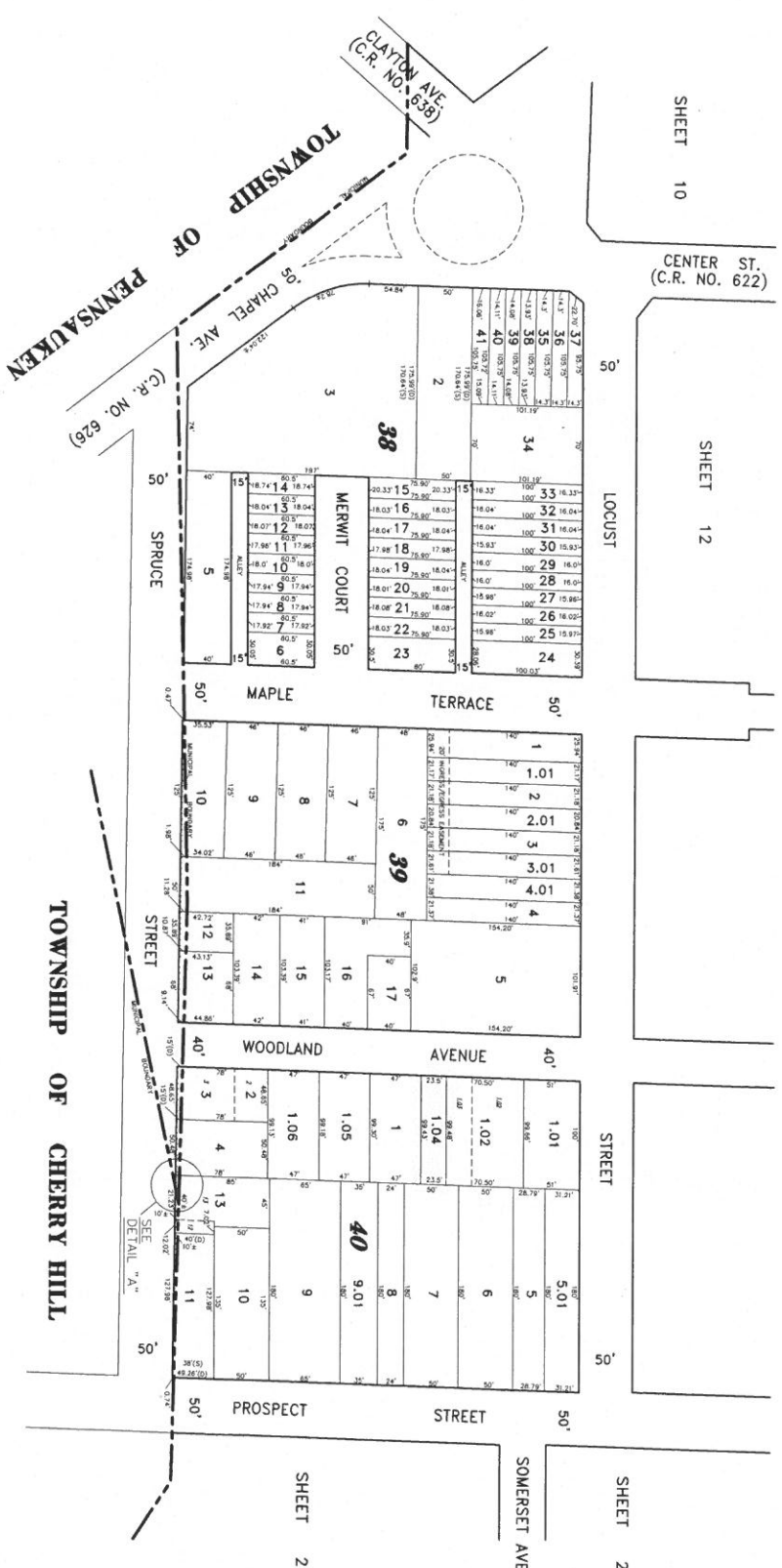
REVISIONS	
1-18-2024	CHANGE 1: REMAP
7-18-2023	CHANGE 2: REMAP
8-28-2023	CHANGE 3: REMAP



THIS TAX MAP IS A TRUE AND CORRECT COPY OF THE ORIGINAL AS APPROVED BY THE BOARD OF TAXATION AND THE BOARD OF SUPERVISORS OF THE TOWNSHIP OF PENNSAUKEN, NEW JERSEY, ON THE DATE SET FORTH HEREIN. THIS TAX MAP IS THE PROPERTY OF THE TOWNSHIP OF PENNSAUKEN, NEW JERSEY, AND IS TO BE KEPT ON FILE WITH THE OFFICIAL RECORDS OF THE TOWNSHIP OF PENNSAUKEN, NEW JERSEY. ANY CHANGES TO THIS TAX MAP MUST BE APPROVED BY THE BOARD OF TAXATION AND THE BOARD OF SUPERVISORS OF THE TOWNSHIP OF PENNSAUKEN, NEW JERSEY.

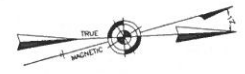
TAX MAP
BOROUGH OF MERCHANTVILLE
 CAMDEN COUNTY NEW JERSEY
 CRAIG F. REMINGTON & VERNICK ENGINEERS
 232 NORTH HANCOCK EAST HANCOCKFIELD, NJ 08043
 TEL: 609-426-1100 FAX: 609-426-1101
 WWW.CRAIGFREMINGTON.COM

DATE	BY	REVISIONS
12-15-2010	CRAIG F. REMINGTON	23924
12-15-2010	CRAIG F. REMINGTON	23924
12-15-2010	CRAIG F. REMINGTON	23924

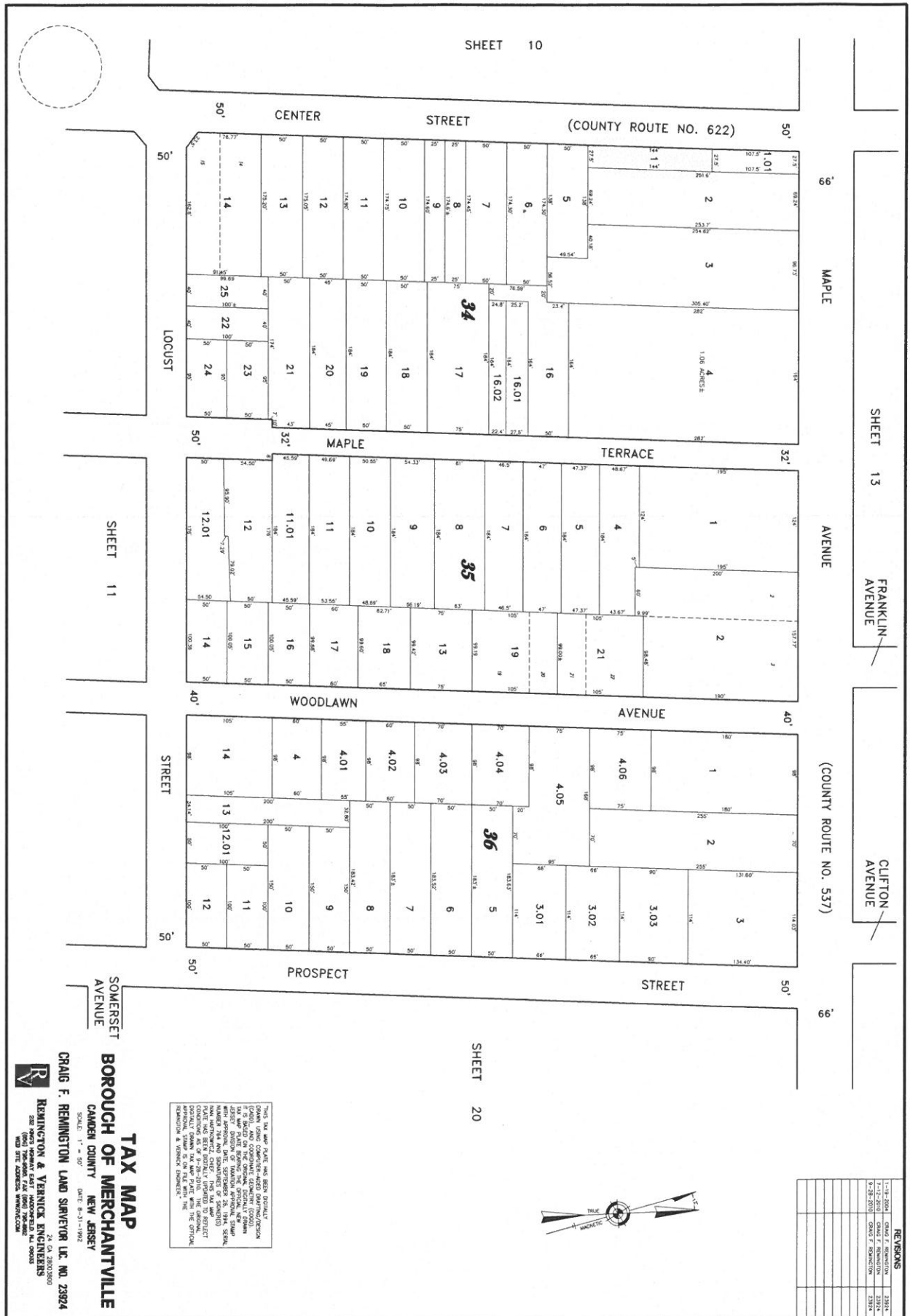


THIS TAX MAP FILE HAS BEEN OFFICIALLY RECORDED IN THE OFFICE OF THE CLERK OF CAMDEN COUNTY, NEW JERSEY, ON 12/15/2010 AT 10:00 AM. THE TAX MAP FILE SHOWS THE OFFICIAL MAP WITH ALL NECESSARY INFORMATION AND NOTES. THE OFFICIAL MAP IS THE ONLY COPY OF THE MAP THAT IS VALID FOR ALL PURPOSES. THE OFFICIAL MAP IS THE ONLY COPY OF THE MAP THAT IS VALID FOR ALL PURPOSES. THE OFFICIAL MAP IS THE ONLY COPY OF THE MAP THAT IS VALID FOR ALL PURPOSES.

TAX MAP
BOROUGH OF MERCHANTVILLE
 CAMDEN COUNTY NEW JERSEY
 SCALE: 1" = 50'
 DATE: 8-31-1992
CRAIG F. REMINGTON & YERINICK INC. NO. 23924
 REMINGTON & YERINICK INC.
 24101 BIRCHWOOD DRIVE
 CAMDEN, NJ 08105
 (856) 965-1111

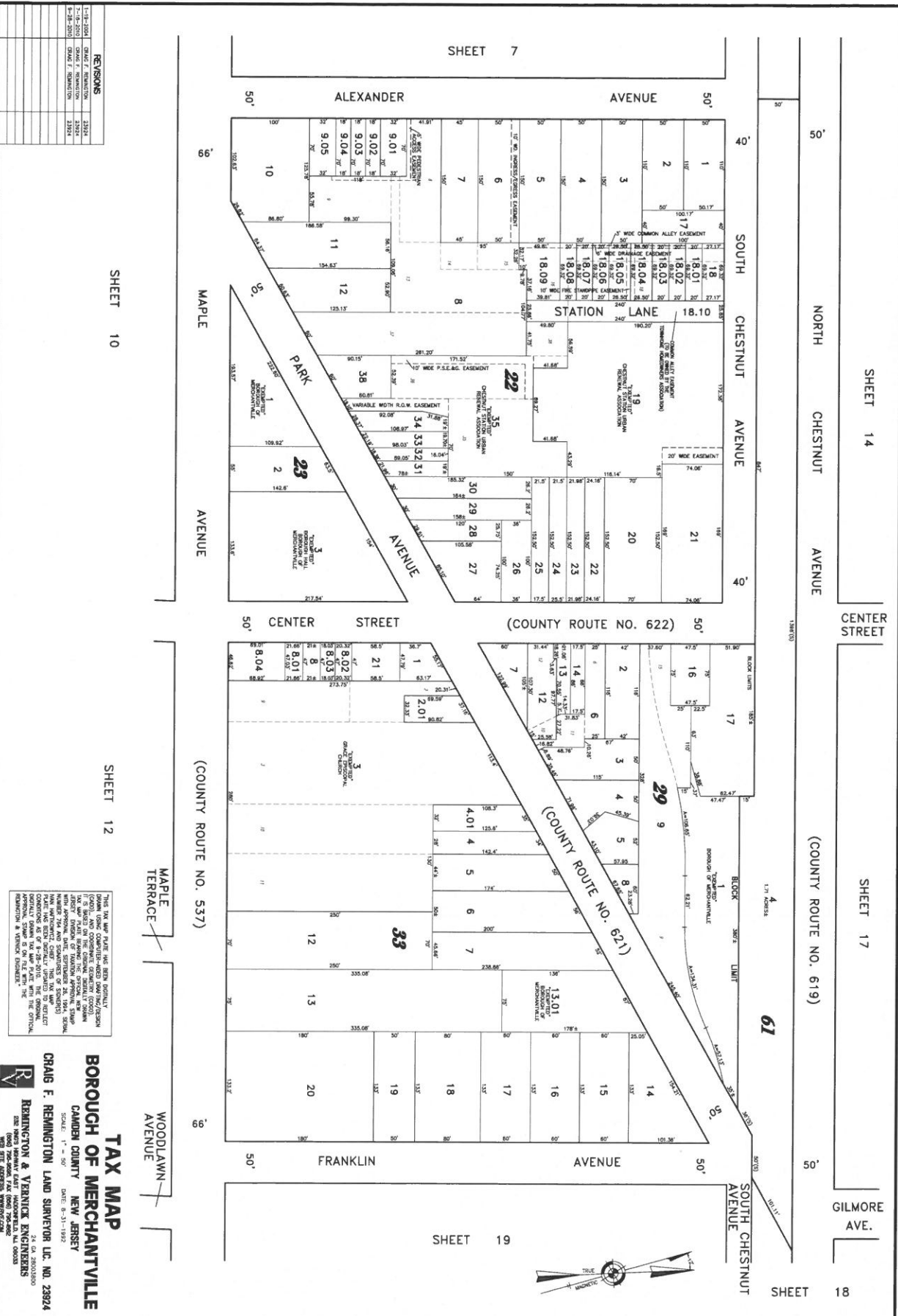


REVISIONS	
1-17-2024	CRAIG F. REMINGTON 23924
7-28-2020	CRAIG F. REMINGTON 23924
7-28-2020	CRAIG F. REMINGTON 23924
7-28-2020	CRAIG F. REMINGTON 23924



THIS TAX MAP PLAT HAS BEEN DETAILED DOWN USING COMPUTER-AIDED DIGITIZATION FROM THE ORIGINAL PLAT RECORDS. IF IT IS FOUND ON THE ORIGINAL PLAT RECORDS THAT THE LOT AREA DOES NOT MATCH THE AREA SHOWN ON THIS MAP, THE AREA SHOWN ON THIS MAP WILL BE THE CORRECT AREA. THE AREA SHOWN ON THIS MAP IS BASED ON THE ORIGINAL PLAT RECORDS AS OF 7-28-2020. THE ORIGINAL RECORDS WILL BE THE CORRECT RECORDS. THE AREA SHOWN ON THIS MAP IS NOT TO BE USED FOR ANY OTHER PURPOSES.

TAX MAP
BOROUGH OF MERCHANTVILLE
 CAMDEN COUNTY NEW JERSEY
 DATE: 8-31-1992
 CRAIG F. REMINGTON LAND SURVEYOR L.C. NO. 23924
 REMINGTON & YERNICK ENGINEERS
 282 0603 WENAWAT EAST WOODBORO, N.J. 08896
 (609) 328-2000 FAX (609) 328-2001
 1001 5TH STREET WOODBORO, NJ 08896



REVISIONS

1-18-2024	CHANGING	2332
7-16-2023	CHANGING	2332
8-28-2023	CHANGING	2332

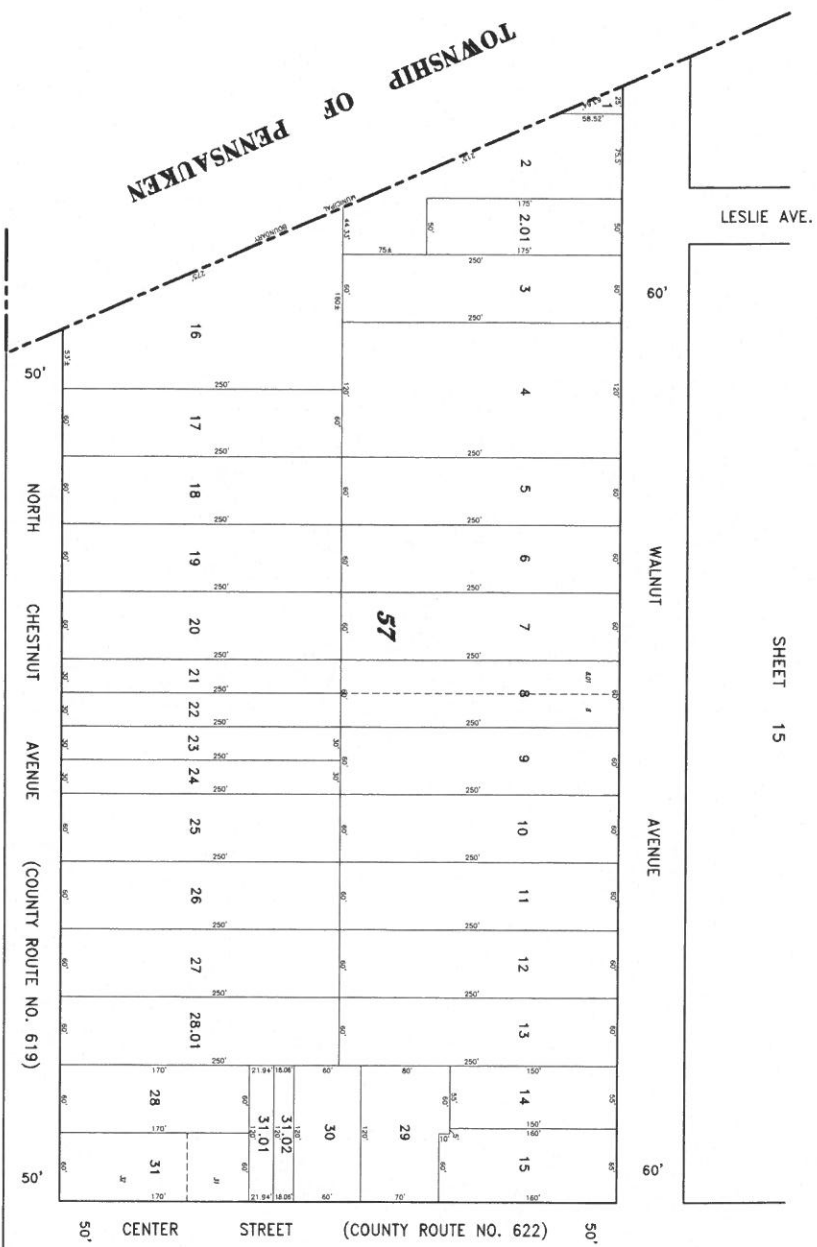
SHEET 10

SHEET 12

THIS TAX MAP HAS BEEN PREPARED BY THE BOROUGH OF CAMDEN COUNTY, NEW JERSEY, AND IS SUBJECT TO THE BOROUGH'S TAX MAP ACT. THE BOROUGH'S TAX MAP ACT PROVIDES THAT THE BOROUGH IS NOT RESPONSIBLE FOR THE ACCURACY OF THE INFORMATION CONTAINED HEREIN. THE BOROUGH'S TAX MAP ACT PROVIDES THAT THE BOROUGH IS NOT RESPONSIBLE FOR THE ACCURACY OF THE INFORMATION CONTAINED HEREIN.

TAX MAP
BOROUGH OF MERCHANTVILLE
 CAMDEN COUNTY, NEW JERSEY
 CRAIG F. REMINGTON, LAND SURVEYOR, L.C. NO. 23924
 REMINGTON & VENTRONE ENGINEERS
 24 G. 28034000
 1000 PINE ST. 2ND FL. CAMDEN, NJ 08102
 856.965.7444

REVISIONS	
1-18-2004	CRAIG F. REMINGTON 23824
2-18-2005	CRAIG F. REMINGTON 23824
3-20-2005	CRAIG F. REMINGTON 23824



SHEET 7

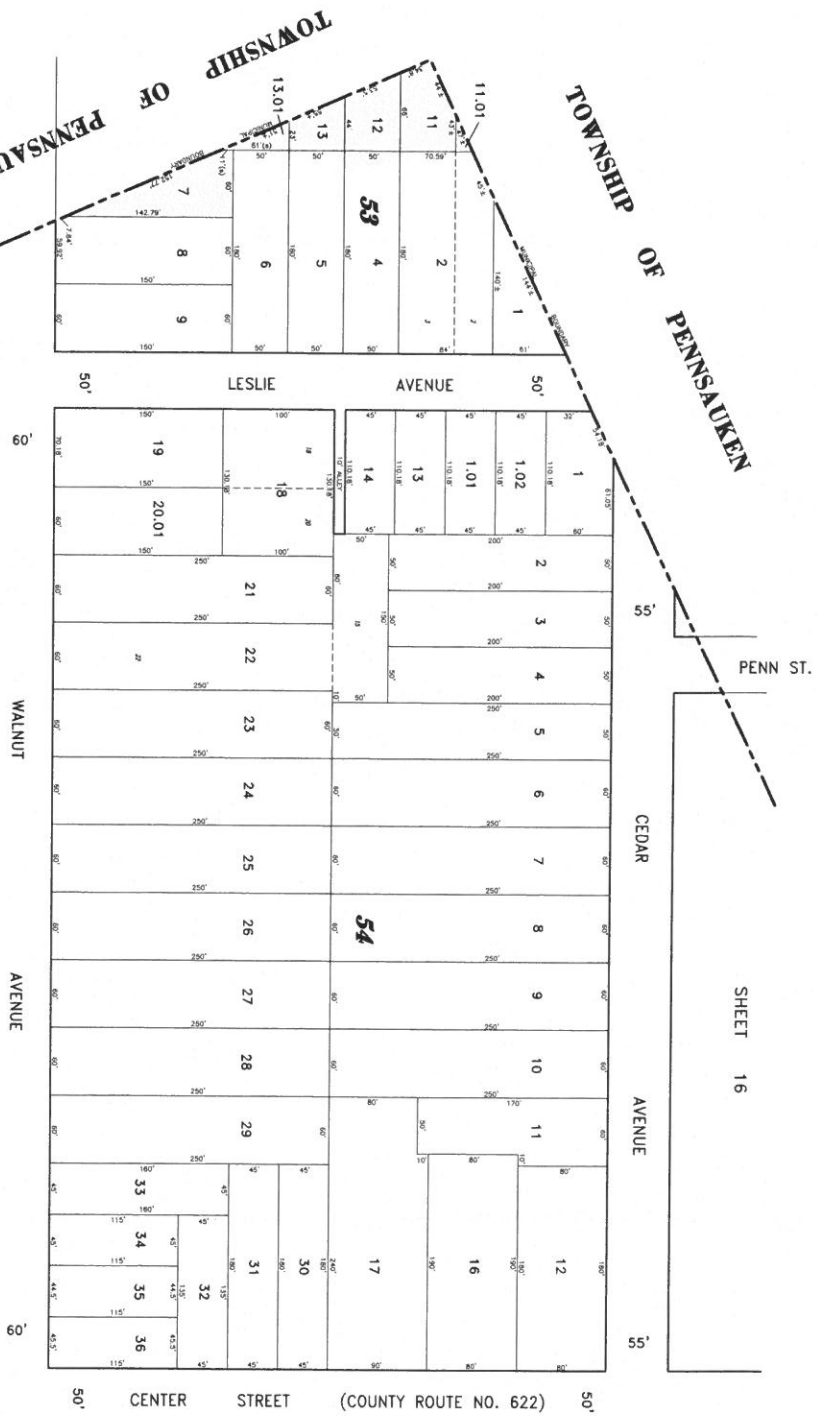
SHEET 13

SHEET 17

THIS TAX MAP PLAT HAS BEEN SOLELY DRAWN USING COMPUTER-AIDED SURVEYING/DESIGN (CAD) SOFTWARE. THE DATA ON THIS MAP IS BASED ON THE ORIGINAL SURVEY DATA AND IS SUBJECT TO THE ACCURACY OF THE ORIGINAL SURVEY DATA AND THE ACCURACY OF THE CAD SOFTWARE. THE TAX MAP ENGINEER HAS REVIEWED THE DATA AND HAS FOUND IT TO BE ACCURATE AND COMPLETE. THE TAX MAP ENGINEER HAS REVIEWED THE DATA AND HAS FOUND IT TO BE ACCURATE AND COMPLETE. THE TAX MAP ENGINEER HAS REVIEWED THE DATA AND HAS FOUND IT TO BE ACCURATE AND COMPLETE.

TAX MAP
BOROUGH OF MERCHANTVILLE
 CAMDEN COUNTY NEW JERSEY
 DATE: 8-31-1992
 SCALE: 1" = 40'
CRAIG F. REMINGTON LAND SURVEYOR L.C. NO. 23924
REMINGTON & VERNICK ENGINEERS
 24 CA 2800300
 1000 PHOENIX BLVD. SUITE 100
 WEB SITE ADDRESS: WWW.REMCO.COM

REVISIONS	
1-18-2004	CRAIG F. REMINGTON 23824
7-18-2005	CRAIG F. REMINGTON 23824
8-28-2005	CRAIG F. REMINGTON 23824



THIS TAX MAP PLAT HAS BEEN PREPARED BY THE CAMDEN COUNTY LAND SURVEYOR IN ACCORDANCE WITH THE PROVISIONS OF TITLE 13, CHAPTER 12 OF THE CAMDEN COUNTY ORDINANCES. THE CAMDEN COUNTY LAND SURVEYOR HAS CONDUCTED A VISUAL INSPECTION OF THE SITE AND HAS FOUND THAT THE INFORMATION CONTAINED HEREIN IS CORRECT AND ACCURATE. THE CAMDEN COUNTY LAND SURVEYOR HAS APPROVED THIS TAX MAP PLAT FOR RECORDATION AND PUBLICATION. THE CAMDEN COUNTY LAND SURVEYOR'S OFFICE IS LOCATED AT 1000 MARKET STREET, CAMDEN, NEW JERSEY 08102. FOR MORE INFORMATION, CONTACT THE CAMDEN COUNTY LAND SURVEYOR'S OFFICE AT (856) 965-1234.

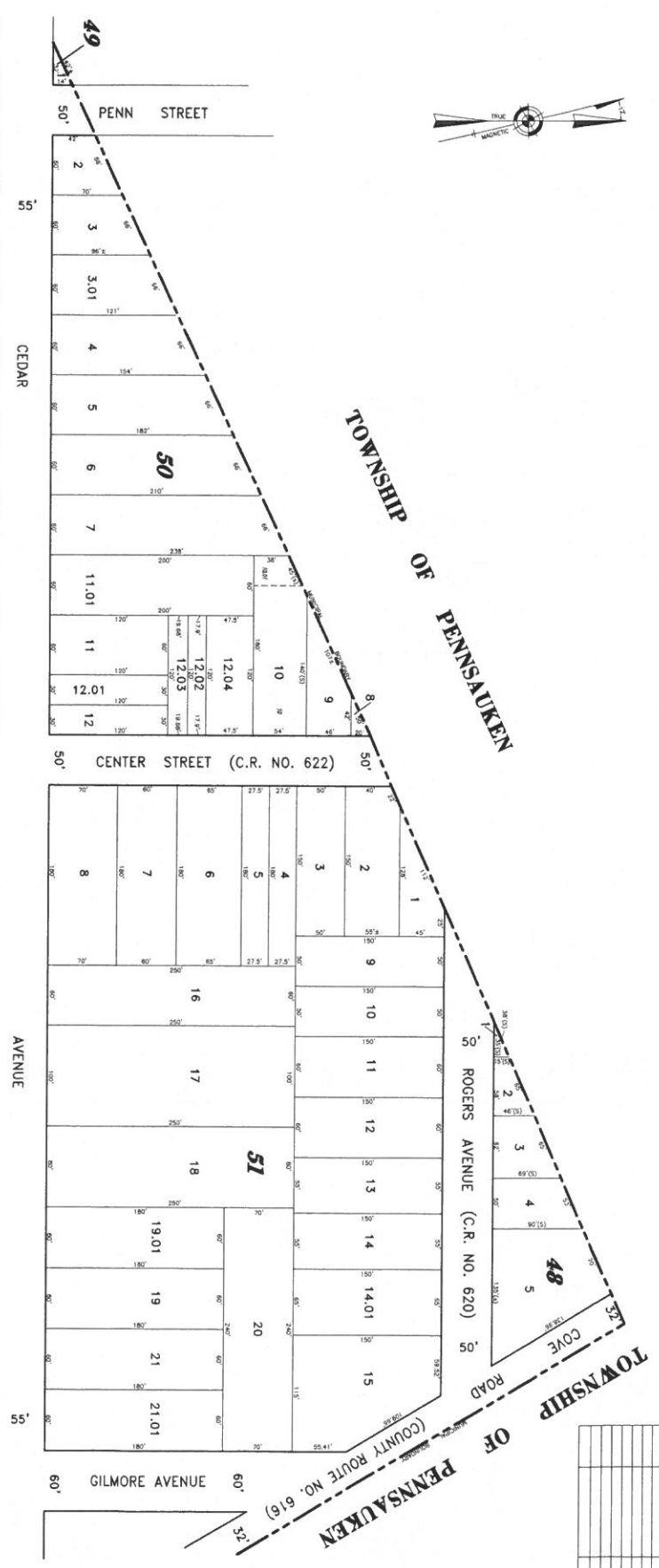
TAX MAP
BOROUGH OF MERCHANTVILLE
CAMDEN COUNTY NEW JERSEY
CRAIG F. REMINGTON LAND SURVEYOR LIC. NO. 23824
 24 GA. 2000000
 REMINGTON & VERNICK ENGINEERS
 1207 MARKET STREET, SUITE 200
 CAMDEN, NJ 08102
 TEL: 856-965-1234
 FAX: 856-965-1235
 WEB SITE ADDRESS: WWW.REMINGTON-VEENICK.COM

SHEET 14

SHEET 17

SHEET 16

REVISIONS	
1-12-2004	CRAIG F. REMINGTON 23924
7-18-2009	CRAIG F. REMINGTON 23924
7-18-2009	CRAIG F. REMINGTON 23924



SHEET 15

SHEET 17

SHEET 18

THIS TAX MAP FILED HAS BEEN OFFICIALLY DRAWN USING COMPUTER-AIDED DRAWING/DESIGN (CAD) SOFTWARE. THE USER HAS REVIEWED AND APPROVED THE DRAWING FOR ACCURACY AND COMPLIANCE WITH ALL APPLICABLE REGULATIONS AND STANDARDS. THE USER'S REVIEW AND APPROVAL DOES NOT GUARANTEE THE ACCURACY OF THE DATA OR THE RESULTS OF THE CAD PROCESSING. THE USER'S REVIEW AND APPROVAL DOES NOT GUARANTEE THE ACCURACY OF THE DATA OR THE RESULTS OF THE CAD PROCESSING. THE USER'S REVIEW AND APPROVAL DOES NOT GUARANTEE THE ACCURACY OF THE DATA OR THE RESULTS OF THE CAD PROCESSING.

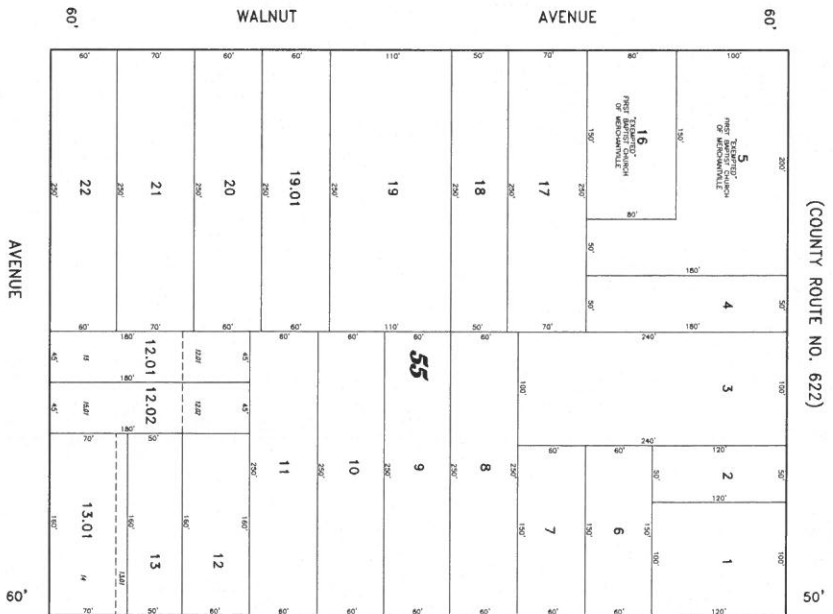
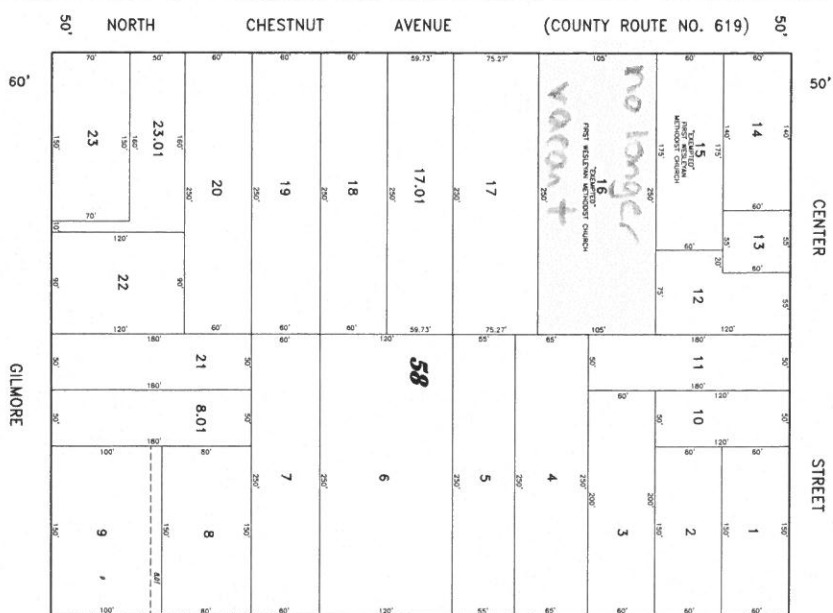
TAX MAP
BOROUGH OF MERCHANTVILLE
 CAMDEN COUNTY NEW JERSEY
CRAIG F. REMINGTON & VERNICK ENGINEERS
 REMINGTON & VERNICK ENGINEERS
 24 CA 28020000
 1000 THE COMMONS FLD (1000) THE COMMONS
 1000 THE COMMONS FLD (1000) THE COMMONS
 1000 THE COMMONS FLD (1000) THE COMMONS

REVISIONS	
1-18-2004	CRANE / REMINGTON 23924
2-18-2005	CRANE / REMINGTON 23924
8-28-2005	CRANE / REMINGTON 23924
1-18-2006	CRANE / REMINGTON 23924

SHEET 13

CENTER ST. S. CHESTNUT AVE.

PARK AVE. (C.R. NO. 621) FRANKLIN AVE. S. CHESTNUT AVE.



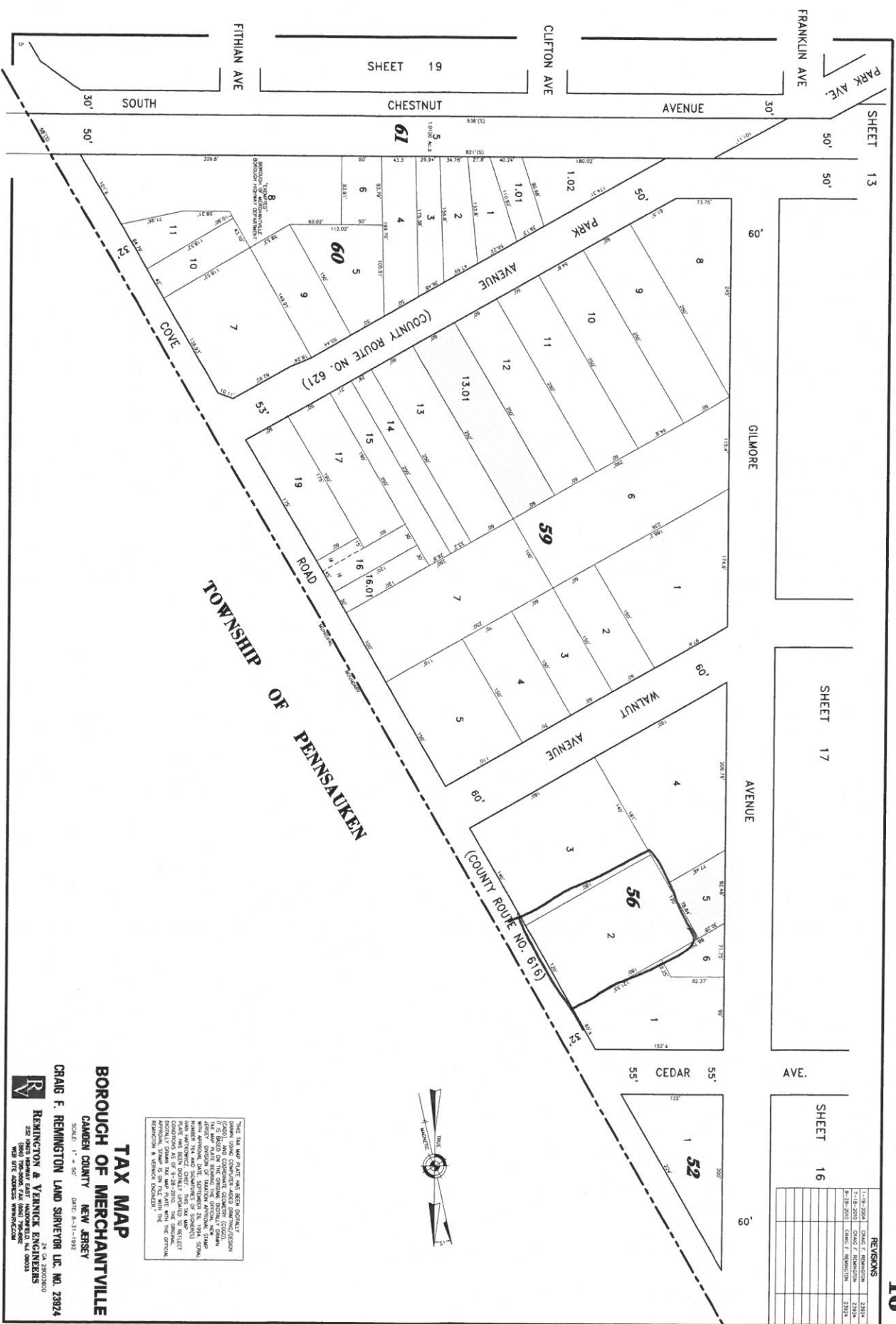
SHEET 16



"THIS TAX MAP PLAN HAS BEEN DESIGNATED AS A 'PROPOSED' PLAN BY THE BOROUGH OF MERCHANTVILLE. IT IS SUBJECT TO THE BOROUGH'S REVIEW AND APPROVAL. THE BOROUGH ENGINEERS HAVE CONDUCTED A VISUAL INSPECTION OF THE PROPERTY AND HAVE FOUND THAT THE INFORMATION PROVIDED IN THIS PLAN IS ACCURATE AND COMPLETE. THE BOROUGH ENGINEERS HAVE CONDUCTED A VISUAL INSPECTION OF THE PROPERTY AND HAVE FOUND THAT THE INFORMATION PROVIDED IN THIS PLAN IS ACCURATE AND COMPLETE. THE BOROUGH ENGINEERS HAVE CONDUCTED A VISUAL INSPECTION OF THE PROPERTY AND HAVE FOUND THAT THE INFORMATION PROVIDED IN THIS PLAN IS ACCURATE AND COMPLETE."

TAX MAP
BOROUGH OF MERCHANTVILLE
 CAMDEN COUNTY NEW JERSEY
 CRANE F. REMINGTON & VARRICK ENGINEERS
 24 CA ZEROSORO
 2000 17th Avenue East
 (609) 796-0000 FAX (609) 796-0000
 WEB SITE ADDRESS: WWW.CFE.COM

REVISIONS	
1-18-2004	CRAIG F. REMINGTON 23824
2-18-2005	CRAIG F. REMINGTON 23824
3-18-2005	CRAIG F. REMINGTON 23824
4-18-2005	CRAIG F. REMINGTON 23824
5-18-2005	CRAIG F. REMINGTON 23824
6-18-2005	CRAIG F. REMINGTON 23824
7-18-2005	CRAIG F. REMINGTON 23824
8-18-2005	CRAIG F. REMINGTON 23824
9-18-2005	CRAIG F. REMINGTON 23824
10-18-2005	CRAIG F. REMINGTON 23824
11-18-2005	CRAIG F. REMINGTON 23824
12-18-2005	CRAIG F. REMINGTON 23824



THIS TAX MAP PLAT HAS BEEN GOVERNMENTALLY APPROVED AND RECORDED IN THE OFFICE OF THE COUNTY CLERK OF CAMDEN COUNTY, NEW JERSEY, ON 06-11-1992. THE MAP IS SUBJECT TO THE CAMDEN COUNTY ZONING ORDINANCE AND ANY AMENDMENTS THEREOF. THE CAMDEN COUNTY ZONING ORDINANCE IS SUBJECT TO THE CAMDEN COUNTY BOARD OF ZONING ADJUSTMENT'S DECISIONS. THE CAMDEN COUNTY BOARD OF ZONING ADJUSTMENT'S DECISIONS ARE SUBJECT TO THE CAMDEN COUNTY BOARD OF SUPERVISORS' DECISIONS. THE CAMDEN COUNTY BOARD OF SUPERVISORS' DECISIONS ARE SUBJECT TO THE CAMDEN COUNTY BOARD OF FREEholders' DECISIONS. THE CAMDEN COUNTY BOARD OF FREEholders' DECISIONS ARE SUBJECT TO THE CAMDEN COUNTY BOARD OF CHIEF FREEholders' DECISIONS. THE CAMDEN COUNTY BOARD OF CHIEF FREEholders' DECISIONS ARE SUBJECT TO THE CAMDEN COUNTY BOARD OF CHIEF FREEholders' DECISIONS.

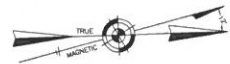
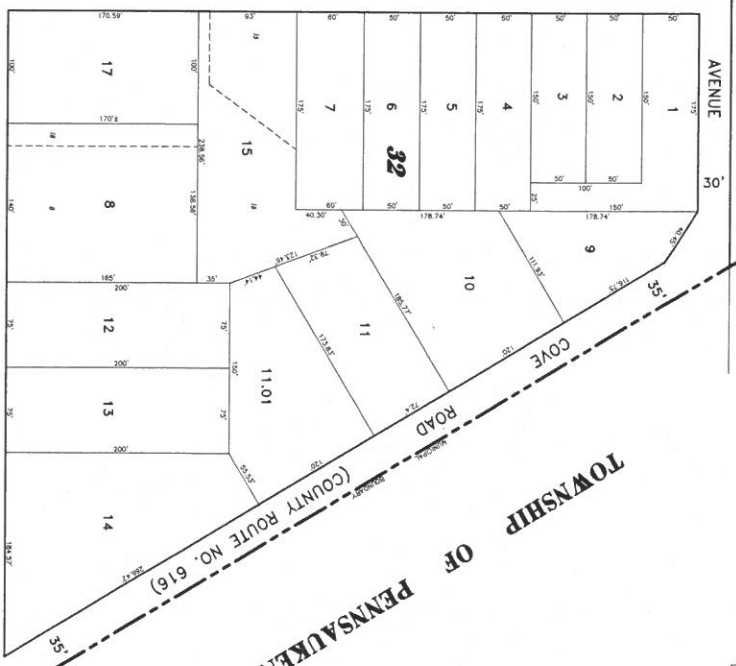
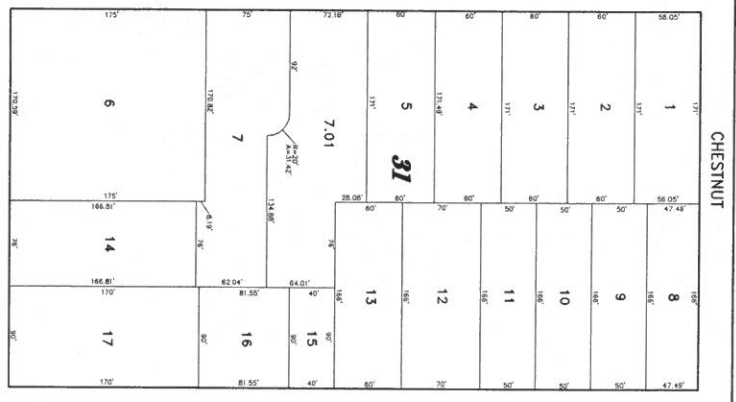
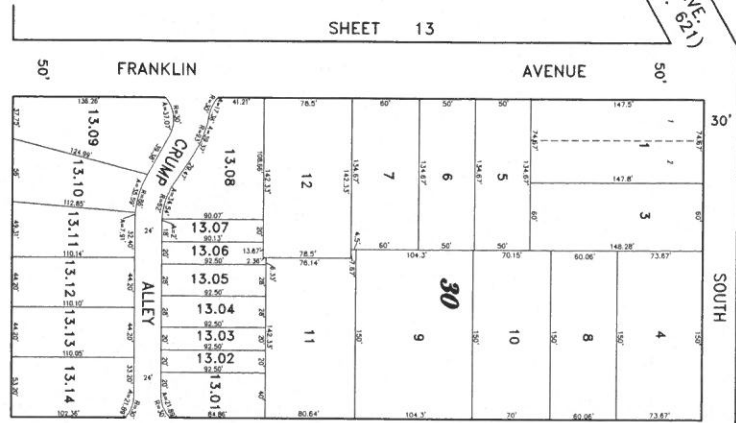
TAX MAP
BOROUGH OF MERCHANTVILLE
 CAMDEN COUNTY NEW JERSEY
 SCALE: 1" = 50'
 DATE: 06-11-1992
CRAIG F. REMINGTON LAND SURVEYOR L.C. NO. 23824
REMINGTON & YERNICK ENGINEERS
 24 CA 28003800
 1000 W. BROADWAY, SUITE 1000
 CAMDEN, NJ 08102
 856-966-1100 FAX: (856) 796-0800
 WEB SITE: CAMDEN, PENNSAUKEN

REVISIONS	
1-18-2004	CRAIG F. REMINGTON 23924
2-18-2004	CRAIG F. REMINGTON 23924
3-18-2004	CRAIG F. REMINGTON 23924
4-18-2004	CRAIG F. REMINGTON 23924
5-18-2004	CRAIG F. REMINGTON 23924
6-18-2004	CRAIG F. REMINGTON 23924
7-18-2004	CRAIG F. REMINGTON 23924
8-18-2004	CRAIG F. REMINGTON 23924
9-18-2004	CRAIG F. REMINGTON 23924
10-18-2004	CRAIG F. REMINGTON 23924
11-18-2004	CRAIG F. REMINGTON 23924
12-18-2004	CRAIG F. REMINGTON 23924

SHEET 17

SHEET 18

(C.R. NO. 621)
PARK AVE.



WOODLAWN AVE.

SHEET 12

PROSPECT ST.

SHEET 20

GREENLEIGH CT.

WESTMINSTER AVE.

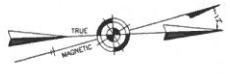
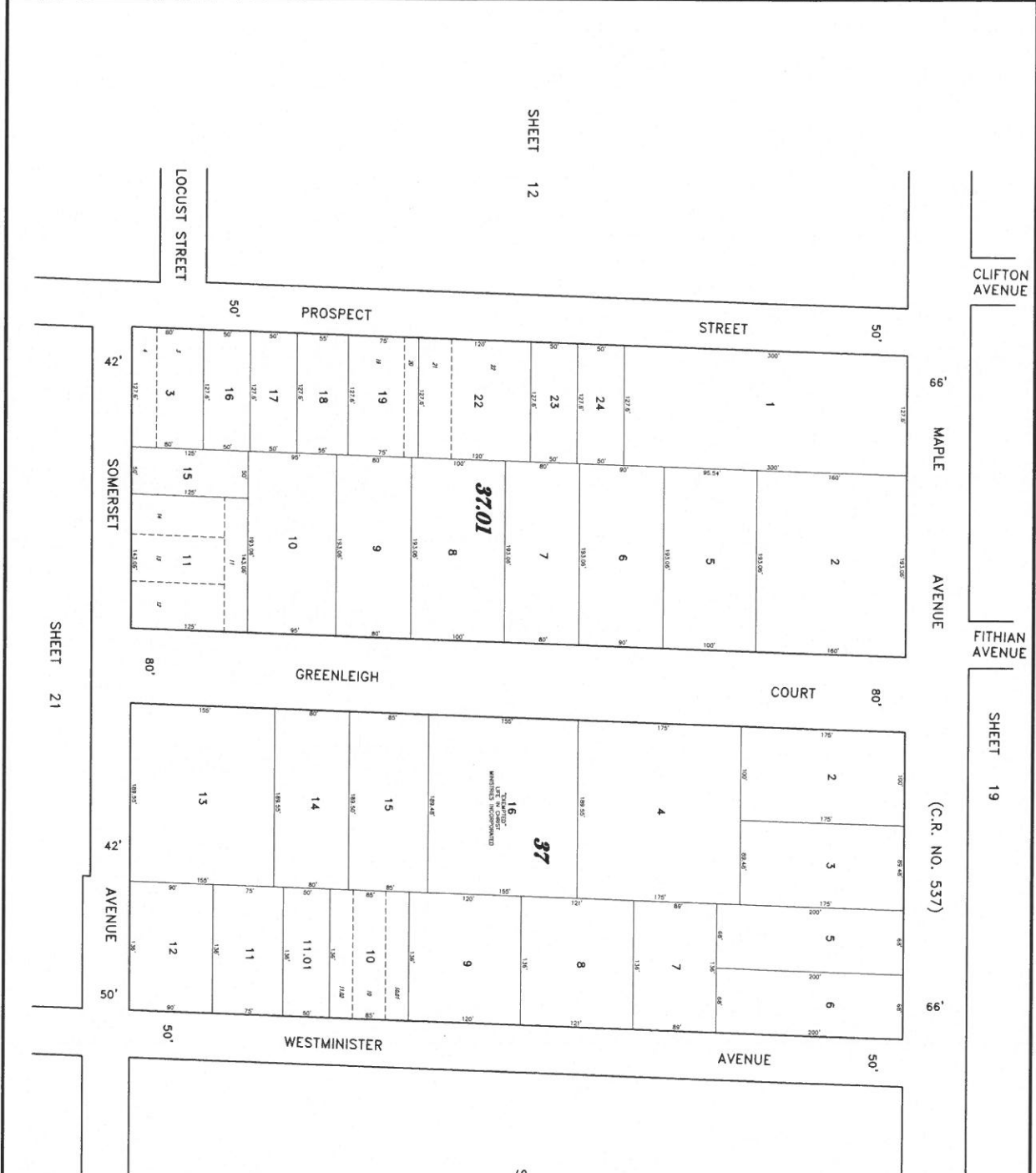
ST. JAMES AVE.
SHEET 22

(C.R. NO. 616)
CHURCH RD.

THIS TAX MAP HAS BEEN PREPARED BY THE CAMDEN COUNTY BOARD OF TAXATION (C.B.T.) AND COORDINATE GEOMETRY (COG) SYSTEM. THE TAX MAP IS THE OFFICIAL NEW JERSEY TAX MAP FILE NUMBER. THE OFFICIAL NEW JERSEY TAX MAP FILE NUMBER IS THE OFFICIAL RECORDING DATE. SEPTEMBER 26, 1964. THE BOARD OF TAXATION AND COORDINATE GEOMETRY (C.B.T.) HAS BEEN DESIGNATED TO REFLECT CHANGES TO THE TAX MAP FILE NUMBER. THE OFFICIAL RECORDING DATE IS THE OFFICIAL RECORDING DATE. THE OFFICIAL RECORDING DATE IS THE OFFICIAL RECORDING DATE.

TAX MAP
BOROUGH OF MERCHANTVILLE
CAMDEN COUNTY NEW JERSEY
CRAIG F. REMINGTON & VERNICK ENGINEERS
LAND SURVEYOR L.C. NO. 23924
24 CA 28003800
1000 TRUCKS ROAD (RD) 23924
MILLSBORO, DE 19966
AND THE BOROUGH ENGINEERS

REVISIONS	DATE	BY	DESCRIPTION
1-18-2004	CRAIG F. REMINGTON	23924	
7-18-2003	CRAIG F. REMINGTON	23924	
9-28-2001	CRAIG F. REMINGTON	23924	



THIS TAX MAP SHALT NOT BEIN DOPINATLY DRAWN USING COMPUTER-AIDED DRAWING/DESIGN IT IS BASED ON THE ORIGINAL SURVEY RECORDS AND FIELD NOTES OF THE CAMDEN COUNTY PLANNING AND ZONING DEPARTMENT. THE ORIGINAL SURVEY RECORDS ARE KEPT AT THE CAMDEN COUNTY PLANNING AND ZONING DEPARTMENT. THE ORIGINAL SURVEY RECORDS ARE KEPT AT THE CAMDEN COUNTY PLANNING AND ZONING DEPARTMENT. THE ORIGINAL SURVEY RECORDS ARE KEPT AT THE CAMDEN COUNTY PLANNING AND ZONING DEPARTMENT.

TAX MAP
BOROUGH OF MERCHANTVILLE
 CAMDEN COUNTY NEW JERSEY
 DATE: 8-31-1992
 CRAIG F. REMINGTON LAND SURVEYOR L.C. NO. 23924
 24 CH. 28023000
 REMINGTON & YERGENK ERIE PLAZA
 332 HANCOCK SQUARE SUITE 200
 PHILADELPHIA, PA 19106
 (215) 563-7800 FAX (215) 563-7801
 1800 STEWART AVENUE, MERCHANTVILLE

LOCUST AVE.

SHEET 20

GREENLEIGH COURT

SOMERSET AVENUE

SHEET 22

SHEET 11

PROSPECT STREET

SPRUCE ST.

37.02

TOWNSHIP OF PENNSAUKEN
BOROUGH OF MERCHANTVILLE
314 RD. 6000

TOWNSHIP OF PENNSAUKEN

WESTMINSTER AVENUE

ST. JAMES AVENUE

SUSSEX AVENUE

PLYMOUTH AVENUE

PLACE (COUNTY ROUTE NO. 624)

SHEET 23

REVISIONS

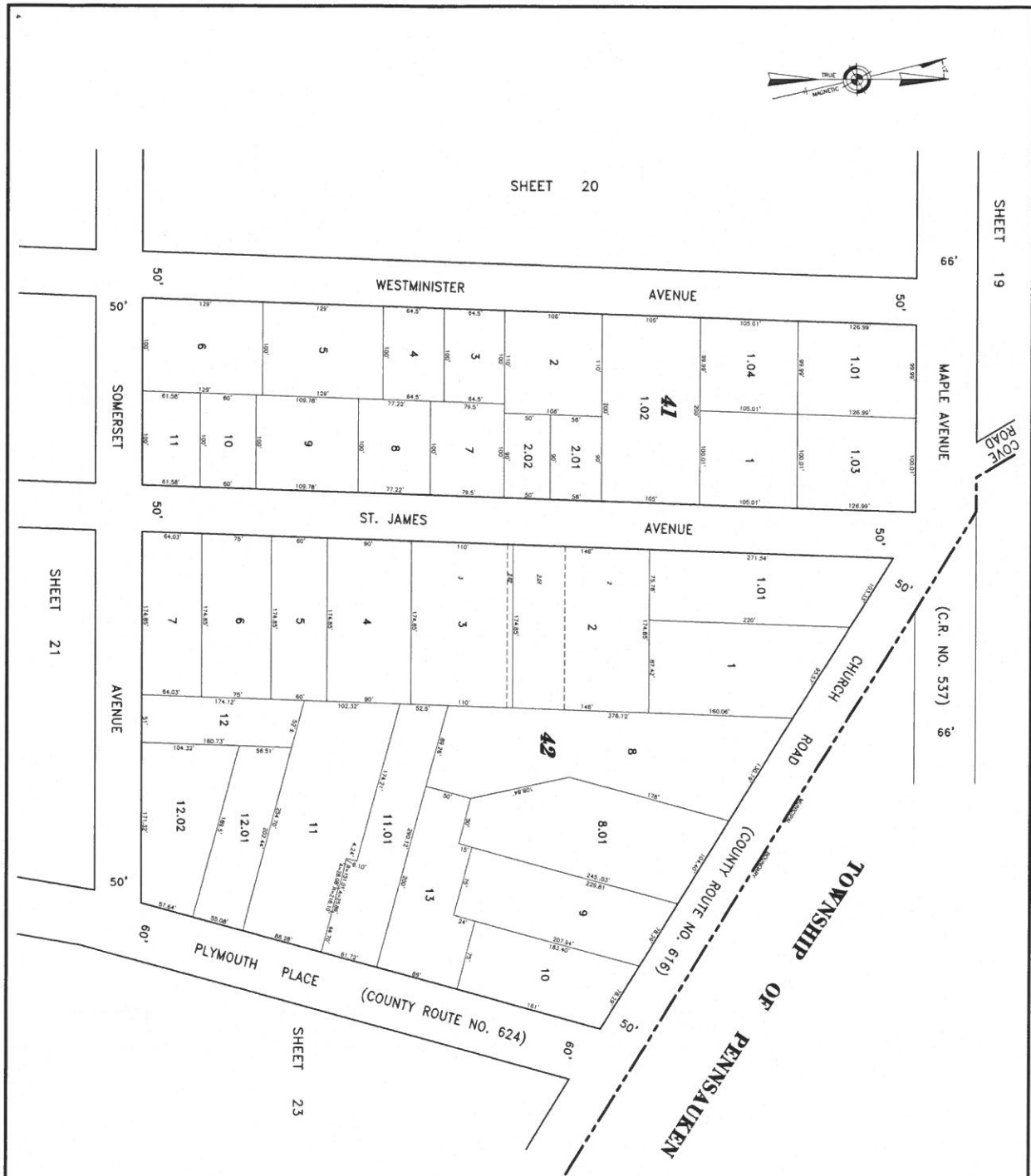
1-15-2004	CHANG Z. RENNINGTON	23924
7-18-2010	CHANG Z. RENNINGTON	23924
8-28-2010	CHANG Z. RENNINGTON	23924



TAX MAP
BOROUGH OF MERCHANTVILLE
 CAMDEN COUNTY NEW JERSEY
 DATE: 8-31-1992
 SCALE: 1" = 50'
CRAIG F. RENNINGTON LAND SURVEYOR, L.C. NO. 23824
REMINGTON & VERNICK ENGINEERS
 282 NINTS ROAD EAST WOODBRIDGE, NJ 07095
 (908) 735-0000 FAX (908) 735-0000
 WWW.REMINGTON-VERNICK.COM

THIS TAX MAP HAS BEEN DRAFTED BY THE ENGINEER AND CHECKED BY THE ENGINEER (COPIES) AND APPROVED BY THE ENGINEER (COPIES) FOR THE BOROUGH OF MERCHANTVILLE. THE BOROUGH ENGINEER'S SIGNATURE AND SEAL MUST BE PLACED ON THE ORIGINAL MAP AND EACH COPY OF THE ORIGINAL MAP. THIS MAP IS NOT VALID UNLESS THE ORIGINAL MAP IS FILED WITH THE COUNTY CLERK'S OFFICE AND A COPY IS FILED WITH THE COUNTY ENGINEER'S OFFICE. THE ENGINEER'S SIGNATURE AND SEAL MUST BE PLACED ON THE ORIGINAL MAP AND EACH COPY OF THE ORIGINAL MAP. THIS MAP IS NOT VALID UNLESS THE ORIGINAL MAP IS FILED WITH THE COUNTY CLERK'S OFFICE AND A COPY IS FILED WITH THE COUNTY ENGINEER'S OFFICE.

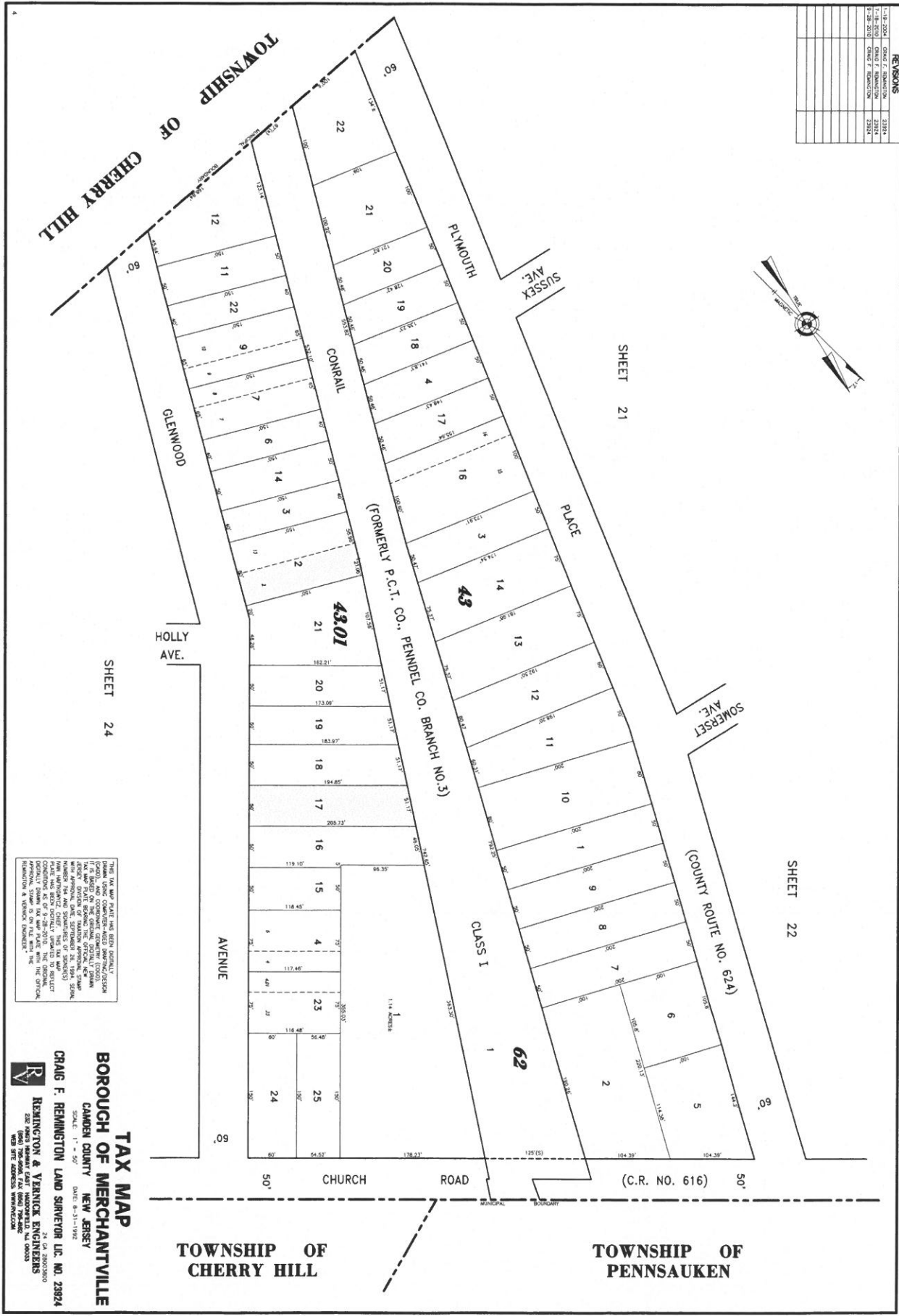
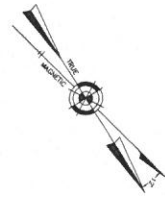
REVISIONS	
1-18-2004	CRAIG F. REMINGTON 23924
7-18-2005	CRAIG F. REMINGTON 23924
7-28-2006	CRAIG F. REMINGTON 23924



THIS TAX MAP PLAN HAS BEEN ORIGINALLY PREPARED BY THE CAMDEN COUNTY ENGINEERING DEPARTMENT AND IS BASED ON THE ORIGINAL RECORD PLANS AND SURVEYS OF RECORDS. THE ENGINEER HAS CONDUCTED A VISUAL CHECK OF THE PLANS AND SURVEYS OF RECORDS AND HAS FOUND THEM TO BE CORRECT. THE ENGINEER HAS BEEN NOTICALLY WARNED TO REFLECT ANY CHANGES TO THE ORIGINAL PLANS AND SURVEYS OF RECORDS. THE ENGINEER HAS BEEN NOTICALLY WARNED TO REFLECT ANY CHANGES TO THE ORIGINAL PLANS AND SURVEYS OF RECORDS. THE ENGINEER HAS BEEN NOTICALLY WARNED TO REFLECT ANY CHANGES TO THE ORIGINAL PLANS AND SURVEYS OF RECORDS.

TAX MAP
BOROUGH OF MERCHANTVILLE
 CAMDEN COUNTY NEW JERSEY
 CRAIG F. REMINGTON LAND SURVEYOR LIC. NO. 23924
 REMINGTON & YANICK ENGINEERS
 24 CA 3800300
 200 W. 10TH ST. PHILADELPHIA, PA. 19106
 WEB SITE ADDRESS: WWW.REMINGTON-ENGINEERS.COM

REVISIONS	DATE	BY	DESCRIPTION
1-15-2024			
1-15-2024			
1-15-2024			
1-15-2024			
1-15-2024			
1-15-2024			
1-15-2024			
1-15-2024			
1-15-2024			
1-15-2024			



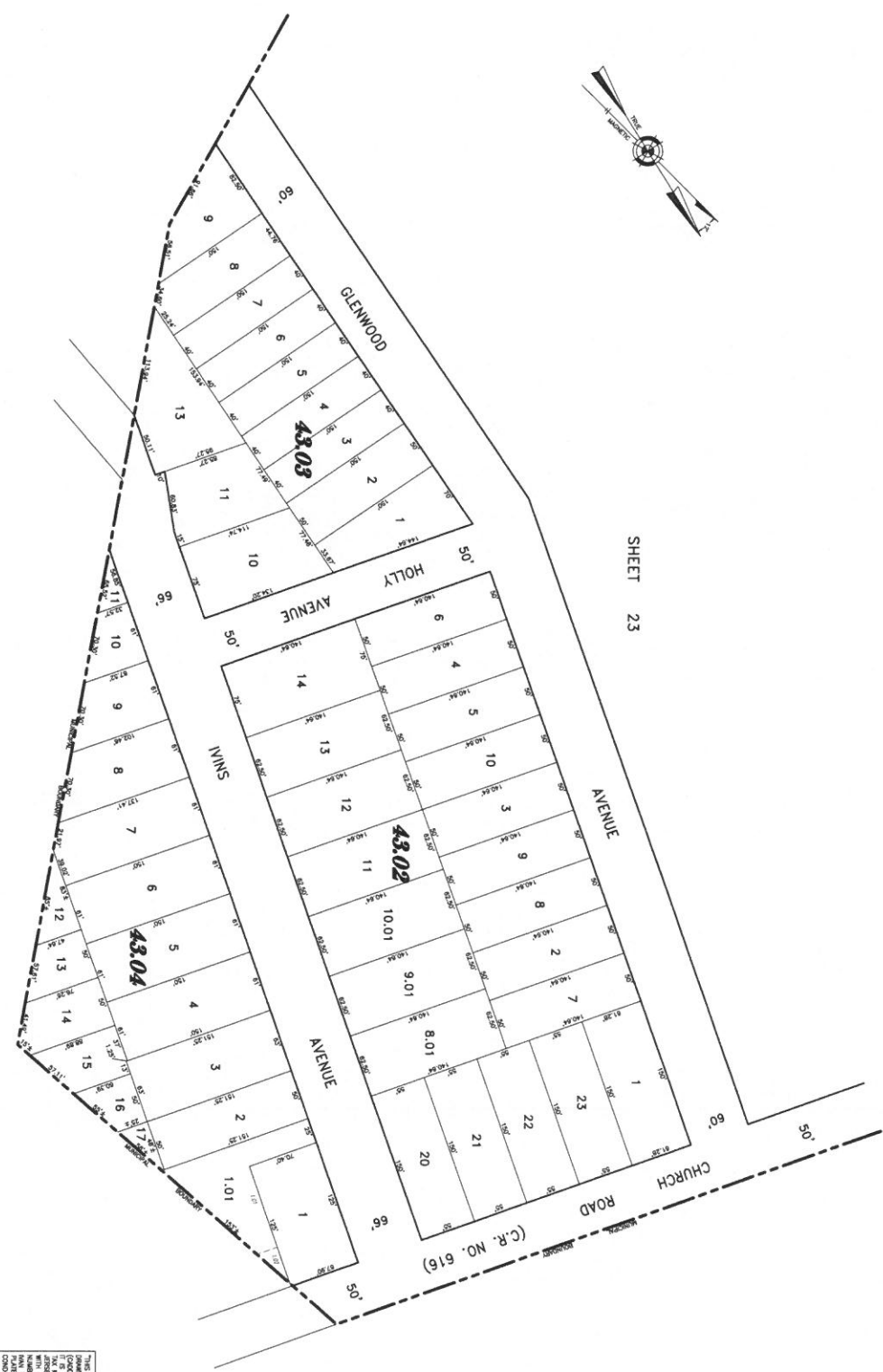
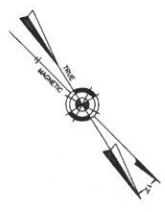
THIS TAX MAP FILE HAS BEEN DRAFTED BY AN UNLICENSED DRAFTSPERSON OR ARCHITECT. THE DRAFTING IS NOT TO BE USED FOR ANY PURPOSES WITHOUT THE SIGNATURE AND SEAL OF A LICENSED PROFESSIONAL ENGINEER. THE DRAFTING IS NOT TO BE USED FOR ANY PURPOSES WITHOUT THE SIGNATURE AND SEAL OF A LICENSED PROFESSIONAL ENGINEER. THE DRAFTING IS NOT TO BE USED FOR ANY PURPOSES WITHOUT THE SIGNATURE AND SEAL OF A LICENSED PROFESSIONAL ENGINEER.

TAX MAP
BOROUGH OF MERCHANTVILLE
CAMDEN COUNTY NEW JERSEY
CRAIG F. REMINGTON & VERNICK ENGINEERS
 24 CA 23003800
 2327 W. BROAD ST. SUITE 200
 CAMDEN, NJ 08102
 TEL: 856-966-1234
 FAX: 856-966-1235
 WEB SITE: ADDRESS: WWW.VENICK.COM

TOWNSHIP OF CHERRY HILL

TOWNSHIP OF PENNSAUKEN

REVISIONS	
1-14-2004	CRAIG F. REMINGTON 13924
1-14-2004	CRAIG F. REMINGTON 13924
8-28-2003	CRAIG F. REMINGTON 13924
12-17-2003	CRAIG F. REMINGTON 13924



SHEET 23

TOWNSHIP OF CHERRY HILL

THIS TAX MAP PLATE HAS BEEN ORIGINALLY PREPARED BY CRAIG F. REMINGTON AND CONSULTING ENGINEERS (CCE) IN CONJUNCTION WITH THE BOROUGH OF MERCHANTVILLE AND CAMDEN COUNTY, NEW JERSEY, AND IS SUBJECT TO THE APPROVAL AND REVIEW OF THE BOARD OF TAXATION, SUPERVISOR OF TAXATION, COUNTY OF CAMDEN, NEW JERSEY, AND THE BOARD OF TAXATION AND SUPERVISOR OF TAXATION, BOROUGH OF MERCHANTVILLE, NEW JERSEY. THE BOARD OF TAXATION, SUPERVISOR OF TAXATION, COUNTY OF CAMDEN, NEW JERSEY, AND THE BOARD OF TAXATION AND SUPERVISOR OF TAXATION, BOROUGH OF MERCHANTVILLE, NEW JERSEY, HAVE REVIEWED AND APPROVED THE MAP FOR THE PURPOSES SET FORTH IN SECTION 18-207. THE ORIGINAL APPROVAL STAMP IS ON FILE WITH THE TOWNSHIP ENGINEER'S OFFICE.

TAX MAP
BOROUGH OF MERCHANTVILLE
 CAMDEN COUNTY NEW JERSEY
 CRAIG F. REMINGTON LAND SURVEYOR L.S. NO. 23924
 24 04 2003/2004
REMINGTON & VERNICK ENGINEERS
 2001 WILSON DRIVE
 NEW JERSEY 08103
 TEL: 856-965-2500 FAX: (856) 798-0820
 WEB SITE ADDRESS: WWW.REMINGTON-ENR.COM